

Amendments to Unit modification rules

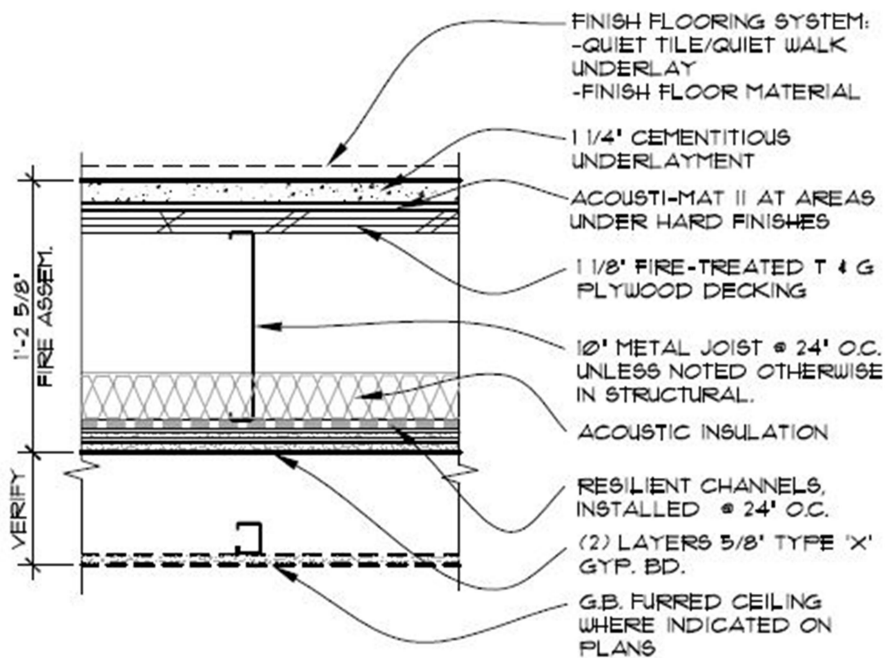
Whereas the board recently adopted new unit modification rules; and

Whereas the rules contained architectural standards for noise mitigation and other design plates; and

Whereas, two of those design plates were inadvertently not included

Now therefore, the board modifies the adopted unit modification procedures to add to Exhibit D entitled "Important construction guidelines" the following specifications:

- Party Wall specification
- Interior wall specification
- Floor / ceiling specification



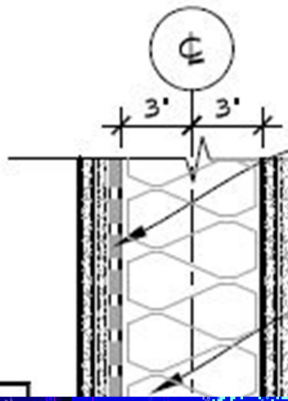
FIRE RATING:	1-HR	IIC RATING:	60+
S.T.C. RATING:	62	GA File No. FC 4370	

MODIFIED PER APPEAL #1 W/CITY

FLOOR/CEILING ASSEMBLY

1 1/2" = 1'-0"

FLOOR-CEILING01



(2) LAYERS 5/8" TYPE 'X'
GYP. BD. or BASE LAYER OF
TYPE 'X' GYP. 'SUREBOARD'
WHEN REQ'D BY STRUCTURAL

ACOUSTIC INSULATION TO FILL
STUD CAVITY DEPTH

TAG



SHEARWALL SCHEDULE

TRACK	CASTING PANELS	STUD TRACK RE. THICKNESS (INLS)	PANEL FASTENERS ⁴		TRACK FASTENING ⁶ SCREWS ⁷	CONCRETE ANCHOR SPACING ⁸	CAPACITY (PLF)
			EDGE ³ (PEE)	INTERMEDIATE SUPPORT ⁵			
A	SURE-BOARD 100 SERIES STRUCT PANELS ¹	43	10 @ 6"oc	10 @ 12"oc	2 ROWS 1/4" @ 12"oc	@ 48"oc	5621
B	SURE-BOARD 100 SERIES STRUCT PANELS ¹	43	10 @ 4"oc	10 @ 12"oc	2 ROWS 1/4" @ 9"oc	@ 48"oc	1761
C	SURE-BOARD 100 SERIES STRUCT PANELS ¹	43	10 @ 3"oc	10 @ 12"oc	2 ROWS 1/4" @ 8"oc	@ 48"oc	8581
D	SURE-BOARD 200 SERIES STRUCT PANELS ²	43	10 @ 2"oc	10 @ 12"oc	2 ROWS 1/4" @ 7"oc	@ 48"oc	5141
E	SURE-BOARD 200 SERIES STRUCT PANELS ²	54	10 @ 3"oc	10 @ 12"oc	3 ROWS 1/4" @ 3"oc	@ 48"oc	18581
F	SURE-BOARD 100 SERIES STRUCT PANELS ¹	34	10 @ 2"oc	10 @ 12"oc	3 ROWS 1/4" @ 7"oc	@ 48"oc	13841

NOTES:

- CAPACITY VARIES WITH STUD BASE METAL GAGE
- PLACE WITH LONG DIMENSION PARALLEL TO STUD FRAMING. THE STEEL FACE MUST BE IN CONTACT WITH THE FRAMING. ALL PANEL EDGES MUST BE FULLY BLOCKED BY FRAMING STUDS AND ARE DOUBLED (BACK TO BACK) AT WEAR WALL ENDS, MINIMUM SEE A574. CONNECT DOUBLE STUDS FULL HT WITH 2"Ø SCREWS AT TWICE THE SPACING FOR THE "EDGE" FASTENING IN THE SCHEDULE.
- PROVIDE EDGE FASTENING AT ALL END STUDS, WALL TRACK AND TOP TRACK.
- SURE-BOARD SCREW HEADS MUST BE FLUSH WITH THE PANEL SURFACE AND PENETRATE INTO THE COLD FORMED STEEL FRAMING MEMBER BY AT LEAST 3 EXPOSED THREADS. MINIMUM EDGE DISTANCE IS 1/2" SEE 1862 FOR SHEARWALL BOT PLATE ANCHORS & CONC SLAB.
- USE GRABBER SCREWS 1000 ER5280
- PRE-DRILL HOLES IN TOP TRACK AS REQ'D FOR SCREWS TO RUN CONTINUOUS FROM TOP TRACK THRU FLUOD INTO BOTTOM TRACK.
- STUD AND TRACK THICKNESS TO BE THE GREATER OF SHEARWALL SCHEDULE OR STUD WALL SCHEDULE (SEE A574-575)



SHEARWALL SCHEDULE

SHEARWALL SCHEDULE

MARK	SHEATHING PANELS	STUD & TRACK MIN. THICKNESS (MILS)	PANEL FASTENERS ⁴		TRACK FASTENING ⁶	CONCRETE ANCHOR SPACING ⁵	CAPACITY (FLF)
			EDGE ³ (PEF)	INTERMEDIATE SUPPORT			
A	SURE-BOARD 200 SERIES STRUCT PANELS ²	43	#8 @ 6"oc	#8 @ 12"oc	2 ROWS 1/4" @ 12"oc	@ 48"oc	562 ¹
B	SURE-BOARD 200 SERIES STRUCT PANELS ²	43	#8 @ 4"oc	#8 @ 12"oc	2 ROWS 1/4" @ 9"oc	@ 48"oc	1110 ¹
C	SURE-BOARD 200 SERIES STRUCT PANELS ²	43	#8 @ 3"oc	#8 @ 12"oc	2 ROWS 1/4" @ 8"oc	@ 48"oc	858 ¹
D	SURE-BOARD 200 SERIES STRUCT PANELS ²	43	#8 @ 2"oc	#8 @ 12"oc	2 ROWS 1/4" @ 7"oc	@ 48"oc	944 ¹
E	SURE-BOARD 200 SERIES STRUCT PANELS ²	54	#8 @ 3"oc	#8 @ 12"oc	3 ROWS 1/4" @ 8"oc	@ 48"oc	1158 ¹
F	SURE-BOARD 200 SERIES STRUCT PANELS ²	54	#8 @ 2"oc	#8 @ 12"oc	3 ROWS 1/4" @ 7"oc	@ 48"oc	1384 ¹

NOTES:

1. CAPACITY VARIES WITH STUD BASE METAL GAGE.
2. PLACE WITH LONG DIMENSION PARALLEL TO STUD FRAMING. THE STEEL FACE MUST BE IN CONTACT WITH THE FRAMING. ALL PANEL EDGES MUST BE FULLY BLOCKED BY FRAMING STUDS AND ARE DOUBLED (BACK TO BACK) AT SHEAR WALL ENDS, MINIMUM, SEE A/51.4. CONNECT DOUBLE STUDS FULL HT WITH 2-#8 SCREWS AT TWICE THE SPACING PER THE "EDGE" FASTENING IN THE SCHEDULE.
3. PROVIDE EDGE FASTENING AT ALL END STUDS, GILL TRACK, AND TOP TRACK.
4. SURE-BOARD SCREW HEADS MUST BE FLUSH WITH THE PANEL SURFACE AND PENETRATE INTO THE COLD FORMED STEEL FRAMING MEMBER BY AT LEAST 3 EXPOSED THREADS. MINIMUM EDGE DISTANCE IS 3/8"
5. SEE 2/51.4 FOR SHEARWALL BOT PLATE ANCHORS @ CONC SLAB.
6. USE GRABBER SCREWS ICBO ER5280.
7. PRE-DRILL HOLES IN TOP TRACK AS REQ'D FOR SCREW TO RUN CONTINUOUS FROM TOP TRACK THRU PLYWD INTO BOTTOM TRACK.



SHEARWALL SCHEDULE

