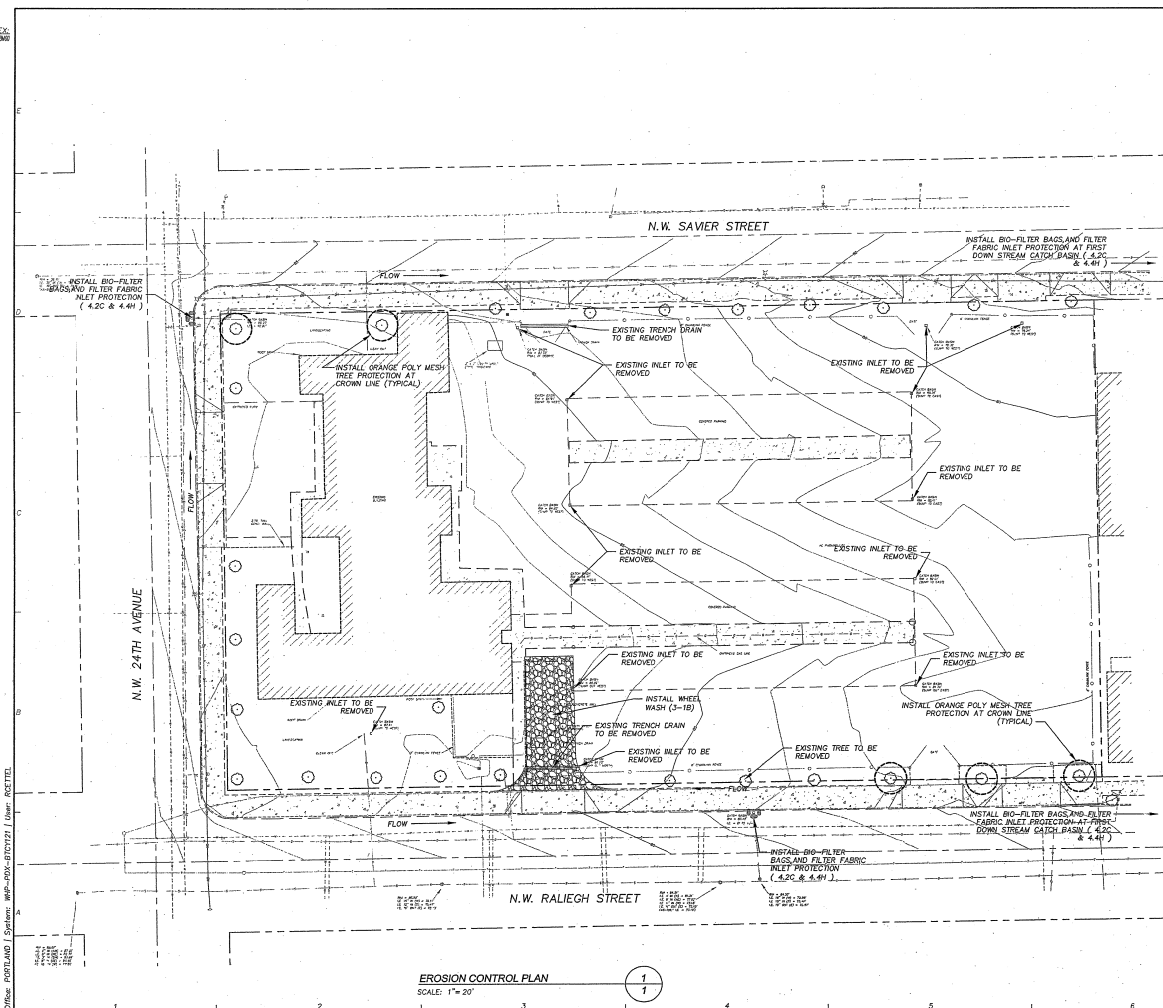


DWG. INDEX  
303-RE-90



EROSION CONTROL PLAN  
SCALE: 1" = 20'

**EROSION CONTROL NOTES:**

1. ALL EROSION, SEDIMENT AND POLLUTION CONTROL PLAN (ESPOP) MEASURES SHOWN SHALL BE INSTALLED AS PER THE DETAIL DRAWINGS IN THE CITY OF PORTLAND- EROSION CONTROL MANUAL (AVAILABLE THROUGH THE BUREAU OF DEVELOPMENT SERVICES, 1900 SW 4TH AVE, PORTLAND OR 97201).
2. TEMPORARY ESPOP MEASURES SHALL BE INSTALLED, INSPECTED AND APPROVED BY A CITY INSPECTOR BEFORE STARTING GROUND DISTURBANCE ACTIVITIES.
3. ESPOP MEASURES SHALL NOT BE REMOVED UNTIL PERMANENT LANDSCAPING HAS BEEN INSTALLED AND A FINAL INSPECTOR HAS BEEN REQUESTED AND APPROVED BY A CITY INSPECTOR.
4. INSPECTIONS MAY BE REQUESTED BY TELEPHONING THE INSPECTION REQUEST NUMBER 823-7000 ONE DAY PRIOR TO THE TIME OF INSPECTION.
5. APPROVAL OF THIS ESPOP DOES NOT CONSTITUTE AN APPROVAL OF PERMANENT ROAD OR DRAINAGE DESIGN (E.G. SIZE AND LOCATION OF ROADS, PIPES, RESTRICTIONS, CHANNELS, RETENTION FACILITIES, UTILITIES, ETC.).
6. THE IMPLEMENTATION OF THIS ESPOP AND THE CONSTRUCTION, MAINTENANCE, REPLACEMENT AND UPGRADING OF THESE ESPOP FACILITIES IS THE RESPONSIBILITY OF THE APPLICANT/CONTRACTOR UNTIL ALL CONSTRUCTION IS COMPLETED AND APPROVED, AND VEGETATION/LANDSCAPING HAS BEEN ESTABLISHED.
7. STABILIZED CONSTRUCTION ENTRANCES SHALL BE INSTALLED AT THE BEGINNING OF CONSTRUCTION AND MAINTAINED FOR THE DURATION OF THE PROJECT. ADDITIONAL MEASURES MAY BE REQUIRED TO INSURE THAT ALL PAVED AREAS ARE KEPT CLEAN FOR THE DURATION OF THE PROJECT.
8. THE BOUNDARIES OF THE CLEARING LIMITS (IF REQUIRED BY THE CITY) SHALL BE CLEARLY FLAGGED IN THE FIELD PRIOR TO CONSTRUCTION. DURING THE CONSTRUCTION PERIOD, NO DISTURBANCE BEYOND THE FLAGGED CLEARING LIMITS SHALL BE PERMITTED. THE FLAGGING SHALL BE MAINTAINED BY THE APPLICANT/CONTRACTOR FOR THE DURATION OF CONSTRUCTION.
9. THE ESPOP FACILITIES SHOWN ON THIS PLAN MUST BE CONSTRUCTED IN CONJUNCTION WITH ALL CLEARING AND GRADING ACTIVITIES, AND IN SUCH A MANNER AS TO INSURE THAT SEDIMENT AND SOILMENT-LADEN WATER DO NOT ENTER THE DRAINAGE SYSTEM ROADWAYS OR IMPAIR APPLICABLE WATER STANDARDS.
10. THE ESPOP FACILITIES SHOWN ON THIS PLAN ARE THE MINIMUM REQUIREMENTS FOR ANTICIPATED SITE CONDITIONS. DURING THE CONSTRUCTION PERIOD, THESE ESPOP FACILITIES SHALL BE UPGRADED AS NEEDED FOR UNEXPECTED STORM EVENTS, AND TO INSURE THAT SEDIMENT AND SOILMENT-LADEN WATER DOES NOT LEAVE THE SITE.
11. THE ESPOP FACILITIES SHALL BE INSPECTED DAILY BETWEEN OCTOBER 1 AND APRIL 30 BY THE APPLICANT/CONTRACTOR AND MAINTAINED AS NECESSARY TO ENSURE THEIR CONTINUED FUNCTIONING. ALL INSPECTIONS SHALL BE NOTED IN AN INSPECTION LOG WHICH SHALL BE MADE AVAILABLE TO THE CITY INSPECTOR UPON REQUEST.
12. THE ESPOP FACILITIES ON INACTIVE SITES SHALL BE INSPECTED AND MAINTAINED A MINIMUM OF ONCE A MONTH OR WITHIN THE 24 HOURS FOLLOWING A STORM EVENT.
13. A SIGN WITH THE CITY'S EROSION CONTROL HOTLINE NUMBER, PROJECT ADDRESS, AND PERMIT NUMBER SHALL BE POSTED AT A LOCATION CLEARLY VISIBLE FROM THE RIGHT OF WAY AND MAINTAINED UNTIL PROJECT COMPLETION.

Office: PORTLAND | System: MAP-REV-6702972 | User: RCETTL

NO. 1  
DATE: 09/20/20  
BY: BFB

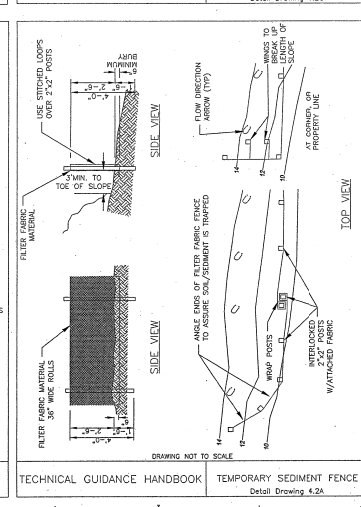
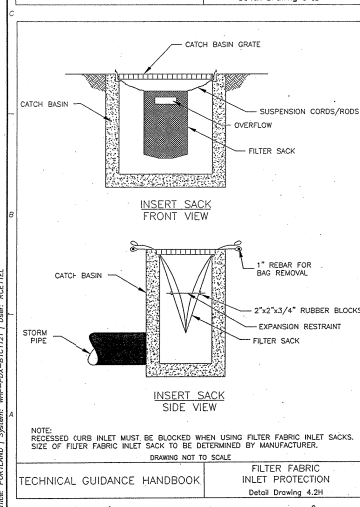
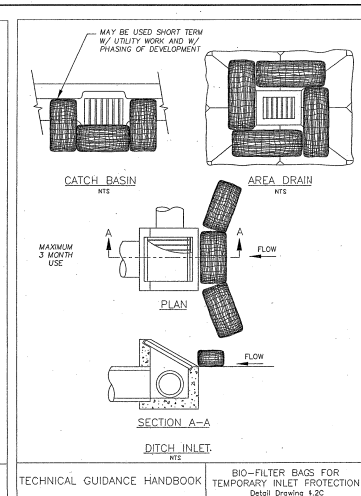
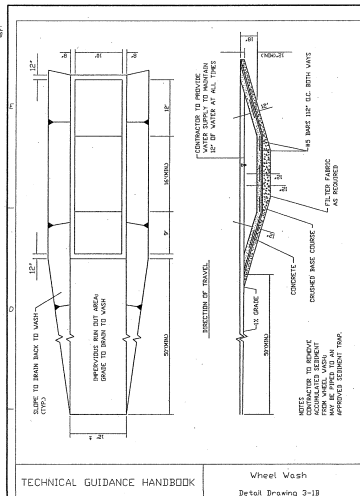
**TRAMMEL CROW  
NW RALEIGH COURT  
EXCAVATION  
EROSION CONTROL PLAN**

PROJECT NO. 31650  
SCALE: 1" = 20'  
SHEET 1A

DRAWN BY: BFB  
CHECKED BY: BFB  
APPROVED BY: BFB  
DATE: 09/20/20

PROJECT NO. 31650  
SCALE: 1" = 20'  
SHEET 1A

DWG INDEX  
31650



### EROSION/SEDIMENT CONTROL TABLE

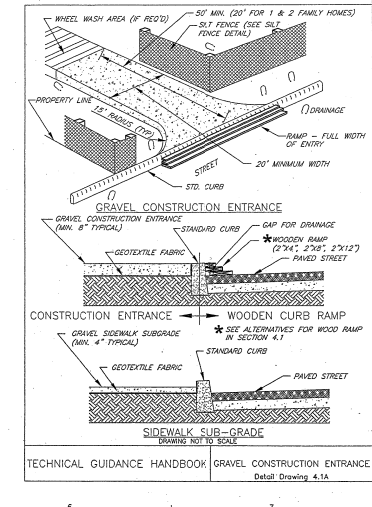
REFERENCE: EROSION CONTROL PLAN TECHNICAL GUIDANCE HANDBOOK  
SITE SLOPE(1)

BASE MEASURES	<2%	<10%	<15%	<20%	<30%	<50%	>50%	UTILITIES CONSTRUCTION CATCH BASIN DITCH DRAINAGE DRAINAGE	STOCKPILES	DITCHES/SWALES (CONSTRUCTION/ PROTECTION)
1. GRAVEL CONSTRUCTION ENTRANCE	X	X	X	X	X	X	X	4.1A		
2. SEDIMENT FENCE/BARRIER @ TOE OF DISTURBED AREA OR STOCKPILE	X	X	X	X	X	X	X	4.2A, 4.2C, 4.3D		X
3. UNDISTURBED BUFFER @ TOE OF DISTURBED AREAS	A							4.2E		
4. SEDIMENT FENCE INSTALLED ON CONTOURS (SPACING)	X	X	X	X	X	X	X	4.2A		
5. TEMP INTERCEPTOR DIKES/SWALES AROUND ACTIVE WORK AREAS	#	#	#	#	#	#	#	4.3A		
6. PIPE SLOPE DRAINS	#	#	#	#	#	#	#	4.3C		
7. CHECK DAMS								4.2A-C, 4.3D	X	
8. STORM DRAIN INLET PROTECTION BARRIER								3.3	X	
<b>WET WEATHER MEASURES</b>										
9. ESTABLISHED GRASS	*	*	*	*	*	*	*	PG 4-55		*
10. 2"-MIN STRAW MULCH COVER FOR SPLASH	0	0	0	0	0	0	0	PG 4-58	0	0
11. 4" TO 6" MIN MULCH COVER FOR SEDIMENTATION	0	0	0	0	0	0	0	PG 4-58	0	0
12. EROSION BLANKETS W/ ANCHORS	0	0	0	0	0	0	0	4.4C, 4.4D	0	*
13. 6-MIL PLASTIC SHEET COVER	0	0	0	0	0	0	0	4.4E		
14. SEDIMENT TRAP OR POND	0	0	0	0	0	0	0	4.4F, 4.4G		
15. DEWATERING								4.8A (5.1A)		
<b>POST CONSTRUCTION</b>										
13. REESTABLISH GROUND COVER OR LANDSCAPE PRIOR TO RESUMING EROSION MEASURES	X	X	X	X	X	X	X	PG 4-55, 4.3A	X	X

KEY: X = BASE MEASURE (REQUIRED AT ALL TIMES)  
 A = ALTERNATE OR ADDITIONAL BASE MEASURE  
 \* = OPTIONAL BASE MEASURE CAN USE AS APPLICABLE  
 # = SUPPLEMENTAL WET WEATHER MEASURE (OCTOBER 1 - APRIL 30)  
 0 = ALTERNATIVE OR ADDITIONAL WET WEATHER MEASURE  
 (1) NOTE: IF DIFFERENT AREAS OF THE SITE HAVE CONSIDERABLY DIFFERENT SLOPES, THE SITE MAY BE DIVIDED UP AND EROSION MEASURES SELECTED FOR EACH AREA FROM THE APPROPRIATE COLUMN IN THE MATRIX

#### STANDARD NOTES FOR SEDIMENT FENCES

- THE FILTER FABRIC SHALL BE PURCHASED IN A CONTINUOUS ROLL CUT TO THE LENGTH OF THE BARRIER TO AVOID USE OF JOINTS. WHEN JOINTS ARE NECESSARY, FILTER CLOTH SHALL BE SPICED TOGETHER ONLY AT A SUPPORT POST, WITH A MINIMUM 6-INCH OVERLAP, AND BOTH ENDS SECURELY FASTENED TO THE POST, OR OVERLAP 2"x2" POSTS AND ATTACH AS SHOWN ON DETAIL SHEET 4-2A.
- THE FILTER FABRIC FENCE SHALL BE INSTALLED TO FOLLOW THE CONTOURS WHERE FEASIBLE. THE FENCE POSTS SHALL BE SPACED A MAXIMUM OF 6 FEET APART AND DRIVEN SECURELY INTO THE GROUND A MINIMUM OF 24 INCHES.
- THE FILTER FABRIC SHALL HAVE A MINIMUM VERTICAL BURIAL OF 6 INCHES. ALL EXCAVATED MATERIAL FROM FILTER FABRIC FENCE INSTALLATION SHALL BE BACKFILLED AND COMPACTED ALONG THE ENTIRE DISTURBED AREA.
- STANDARD OR HEAVY DUTY FILTER FABRIC FENCE SHALL HAVE MANUFACTURED STITCHED LOOPS FOR 2"x2" POST INSTALLATION. STITCHED LOOPS SHALL BE INSTALLED ON THE UP HILL SIDE OF THE SLOPED AREA.
- FILTER FABRIC FENCES SHALL BE REMOVED WHEN THEY HAVE SERVED THEIR INTENDED PURPOSE. BUT NOT BEFORE THE UP-SLOPE AREA HAS BEEN PERMANENTLY PROTECTED AND STABILIZED.
- FILTER FABRIC FENCES SHALL BE INSPECTED BY APPLICANT/CONTRACTOR IMMEDIATELY AFTER EACH RAINFALL AND AT LEAST DAILY DURING PROLONGED RAINFALL. ANY REQUIRED REPAIRS SHALL BE MADE IMMEDIATELY.



TRAMMEL CROW  
NW RALEIGH COURT  
EXCAVATION  
EROSION CONTROL DETAILS

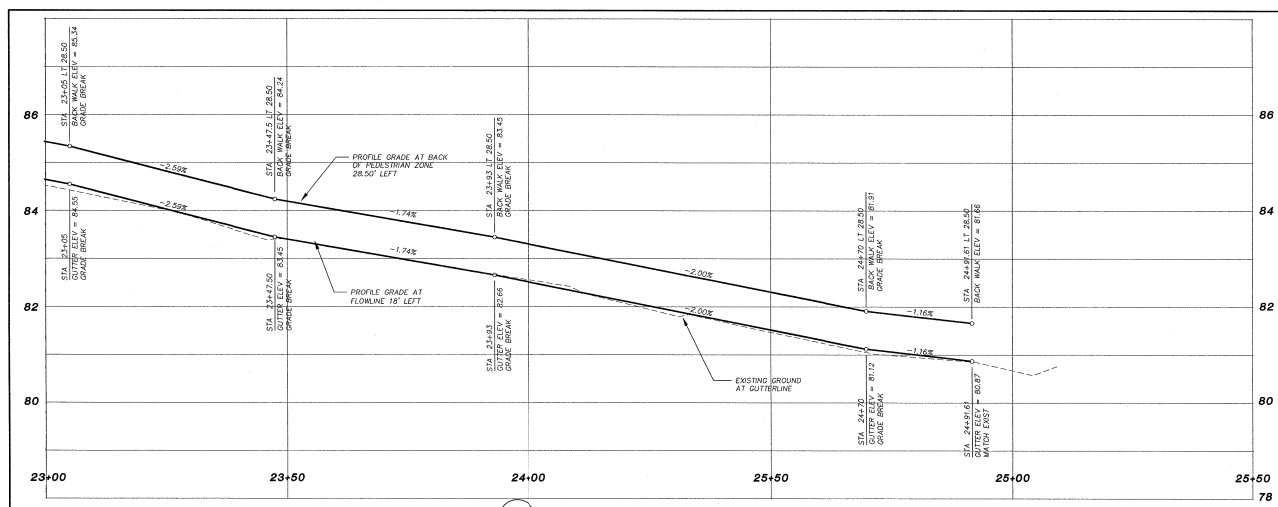
PROJECT NO. 31650  
DRAWING FILE NAME: 31650-land-ec02  
DATE: 12/31/04  
SCALE: 1"=20'

DESIGNED BY: RMC  
CHECKED BY: DDP  
DRAWN BY: RMC  
LAST EDIT: 12/31/04  
DATE: 12/31/04  
SCALE: 1"=20'

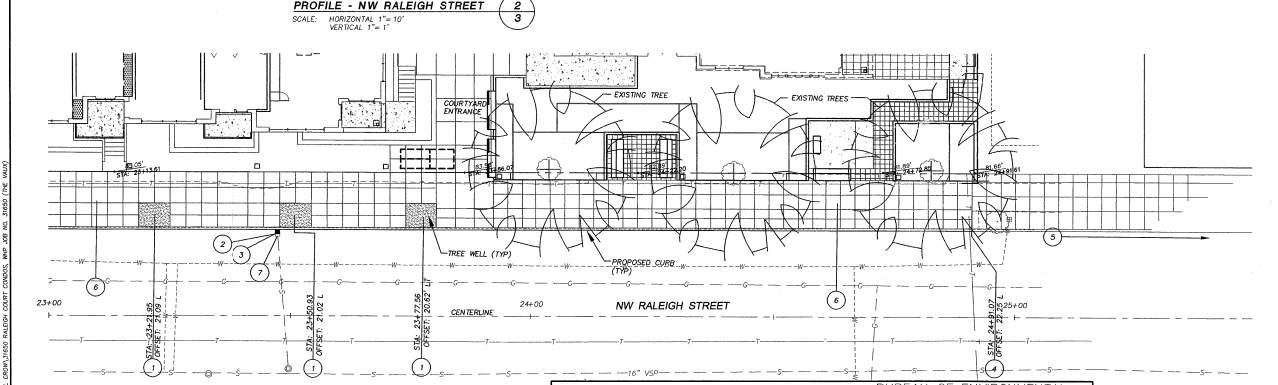
SHEET  
1B



CITY OF PORTLAND FIRST REDLINE REVIEW SET  
 FINAL SET TO FOLLOW



- CONSTRUCTION NOTES**
- 1 PLANT TREES. SEE SHEET 9, STREET TREE PLANTING PLAN.
  - 2 CONSTRUCT CONCRETE CURB INLET CUTTER EL. = 83.47, 3M EL. = 83.29' 10' I.E. CUT = 81.75' (3) 26.0 L.F. EXISTING 10" CSP @ S = 0.3200
  - 3 INLET EROSION PROTECTION. SEE GENERAL NOTE 26, SHEET 7
  - 4 MATCH EXISTING CURB AND SIDEWALK FINISHED GRADE.
  - 5 INLET EROSION PROTECTION AT NEXT INLET. SEE GENERAL NOTE 26, SHEET 7.
  - 6 REMOVE EXISTING CURB, SIDEWALK AND PAVING.
  - 7 REMOVE EXISTING INLET.



**PLAN - NW RALEIGH STREET**  
 SCALE: 1"=10'

NO.	DATE	REVISION	APPROVED

**APPROVALS:**

CHIEF ENGINEER: REG. PROF. ENGR. 16351 WILLIAM F. RYAN, P.E.

CHIEF ENGINEER: REG. PROF. ENGR. 17237

CHIEF ENGINEER: REG. PROF. ENGR. 12438

**BUREAU OF ENVIRONMENTAL SERVICES**  
 PORTLAND OFFICE OF TRANSPORTATION

TOM POTTER, MAYOR  
 BRANT WILLIAMS, P.E., CITY ENGINEER

**W&H PACIFIC**  
 3705 SW Burnside Road  
 Suite 300  
 Portland, Oregon 97205  
 503.245.0445  
 503.245.0776 Fax  
 w&hpacific.com

Planners • Engineers • Surveyors • Landscape Architects

**STREET IMPROVEMENTS OF**

**NW RALEIGH STREET**  
 STA 23+00.00, TO STA 24+91.61

1/4 SECTION 2827  
 JOB NO. XXXXX  
 SHEET NO. 3 OF 9

TCR - THE VAUX  
 TRAMMELL CROW RESIDENTIAL

**MARK DATE**

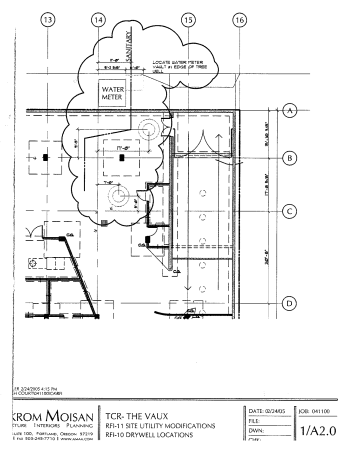

DATE: 03.10.05  
 JOB: 041100  
 FILE: 31650-LAND-PP02  
 DRAWING:  
 CHECKED:

REGISTERED PROFESSIONAL  
 16451  
 OREGON  
 CIVIL ENGINEER  
 EXPIRES: 12/31/06

STREET IMPROVEMENTS  
 NW RALEIGH ST

C1.03







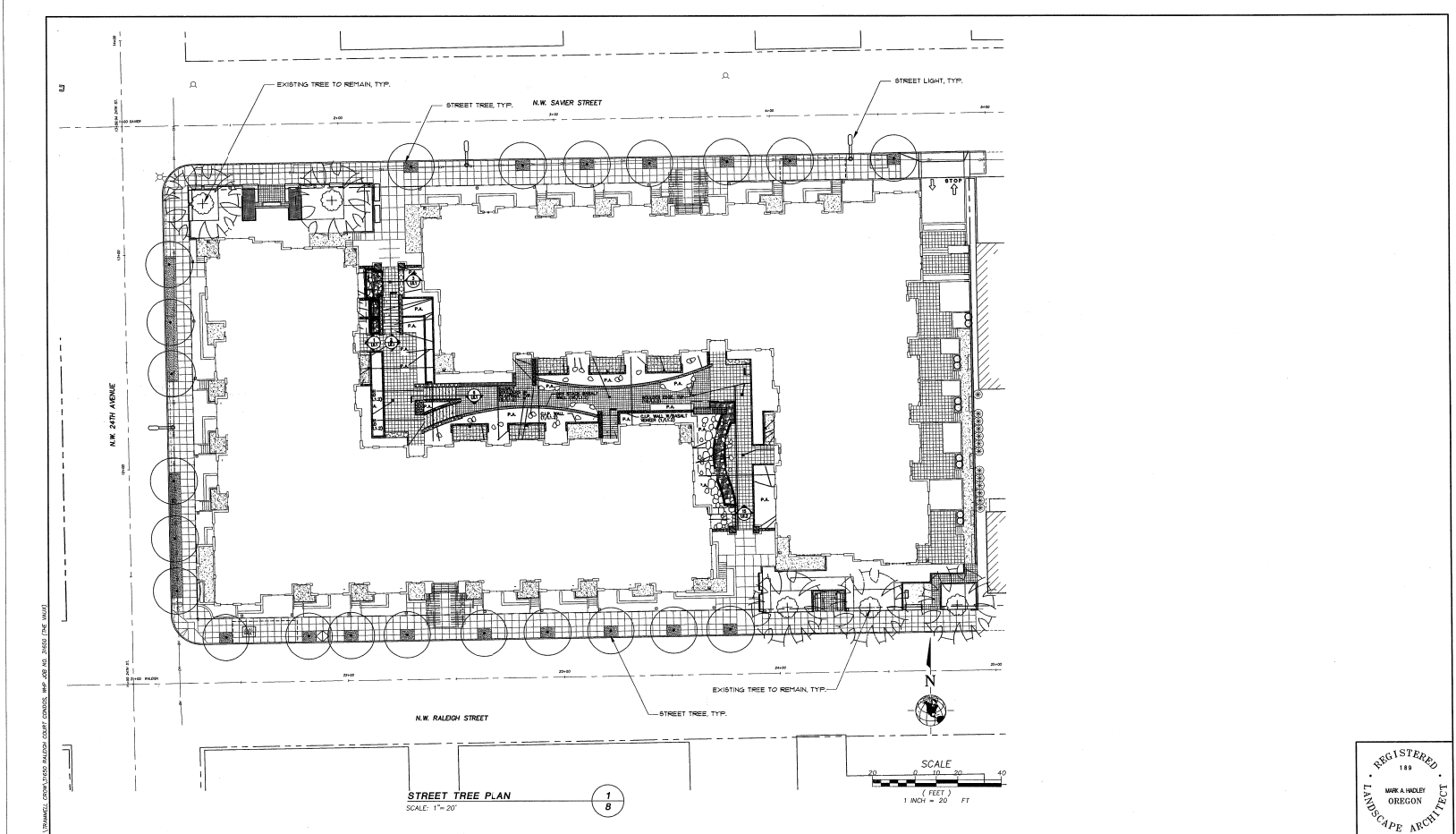








CITY OF PORTLAND FIRST REDLINE REVIEW SET  
 FINAL SET TO FOLLOW



**STREET TREE PLAN**  
 SCALE: 1" = 20'

NO.	DATE	DESCRIPTION	APPRO.

CONSTRUCTED BY	DESIGNED BY	DATE APPROVED
PROJECT COMPLETED	DCB	
MAP CORRECTED BY	BY ENGINEER	
DATA ENTERED ON 1/4 SEC MAP BY	DCB	LW
DATA ENTERED ON THIS MAP BY	CHECKED BY	
ELECTRONIC FILE NAME: 31650-LAND-TR01.DWG	DESIGNED BY	
	REVIEWED BY	

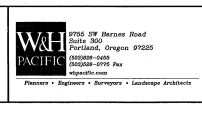


APPROVALS:

PRINCIPAL ENGINEER REC. PROF. ENGR. 11,207  
 TOM POTTER

CITY ENGINEER REC. PROF. ENGR. 14,348  
 BRANT WILLIAMS, P.E.

CITY OF PORTLAND, OREGON  
 PORTLAND  
 OFFICE OF TRANSPORTATION



**STREET TREE PLAN**

VA SECTION 2827  
 JOB NO. 3000X  
 SHEET NO. 9 OF 9

**NW RALEIGH STREET  
 NW SAWYER STREET  
 NW 24TH AVENUE**

MARK	DATE

DATE: 03.10.05  
 JOB: 041100  
 FILE: 31650-LAND-TR01  
 DRAWN:  
 CHECKED:

REGISTERED  
 189  
 LANDSCAPE ARCHITECT  
 MARK A. HADLEY  
 OREGON

STREET TREE PLAN







