

SALES & MARKETING OFFICE 2335 NW SAVIER PORTLAND, OREGON 97210
T 503.221.0700 F 503.221.0702 WWW.THEVAUX.COM



NORTHWEST CONDOMINIUM LIVING

A TRADITION OF HOMECOMING

The Vaux, a new residential building located at NW 24th and Savier, has been named to honor a long-time neighborhood tradition. For a few weeks in the fall of each year, thousands of migrating Vaux's Swifts take up residence nearby in the brick chimney of Chapman Elementary School. During these visits, neighbors gather in the evenings to watch the birds spiraling back to their temporary home. Create your own homecoming traditions in one of The Vaux's 145 classically styled, progressively designed living spaces.

And let the Nob Hill neighborhood welcome you home.



*Take the time to relax
and explore Nob Hill's
cafes and shops*



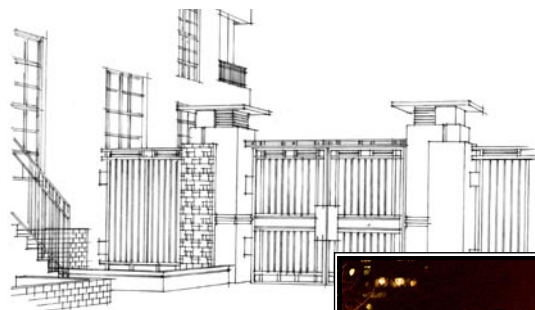
SETTLE INTO A WELL-ESTABLISHED NEIGHBORHOOD



IMPROMPTU ENTERTAINMENT JUST DOWN THE AVENUE

A TRANQUIL OASIS CLOSE TO PORTLAND'S ECLECTIC HEART

The Vaux nestles in a historic neighborhood of Victorian and Craftsman-style homes close to Portland's vibrant core, and offers a serene retreat set amid the lively flow of urban life. Linger and recharge in a nearby park or coffee bar. Walk, bike, tango or hop a streetcar to galleries, bistros, concert halls, book-stores and shops. Ample underground parking and easy freeway access can help you migrate farther toward the coast, mountains, high desert or other attractions of the great Northwest.



Easy access to the streetcar connects you to the rest of the city

A TRIBUTE TO DESIGN & LIVABILITY

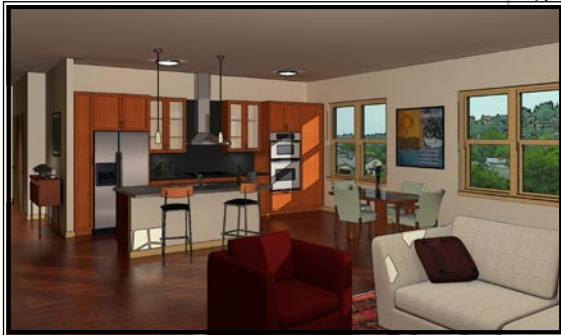
The Vaux blends the rich exterior appearance of an urban brownstone with modern architecture inside and out. Integrating brick, wood and copper, the clean lines and dynamic shape of the two four-story buildings take inspiration from Northwest architectural traditions. Beyond the streetscape and residences, an inner courtyard harmonizes open space, greenery and the sound of water flowing over stone.

Features & amenities include -

- ✓ Loft-style studios, 1 & 2 bedrooms, penthouses
- ✓ Wide range of floor plans, 600sf to 2,000sf
- ✓ Granite, tile & hardwood finishes
- ✓ Fireplaces with granite surrounds
- ✓ Oversized double-hung wood windows
- ✓ French balconies, terraces
- ✓ Central courtyard
- ✓ Secured underground parking

When it's time to return home, alight at The Vaux.

*The quality of light
and warmth of wood tones
invite you home*



EXPANSIVE WINDOWS OPEN ONTO NEIGHBORHOOD VIEWS