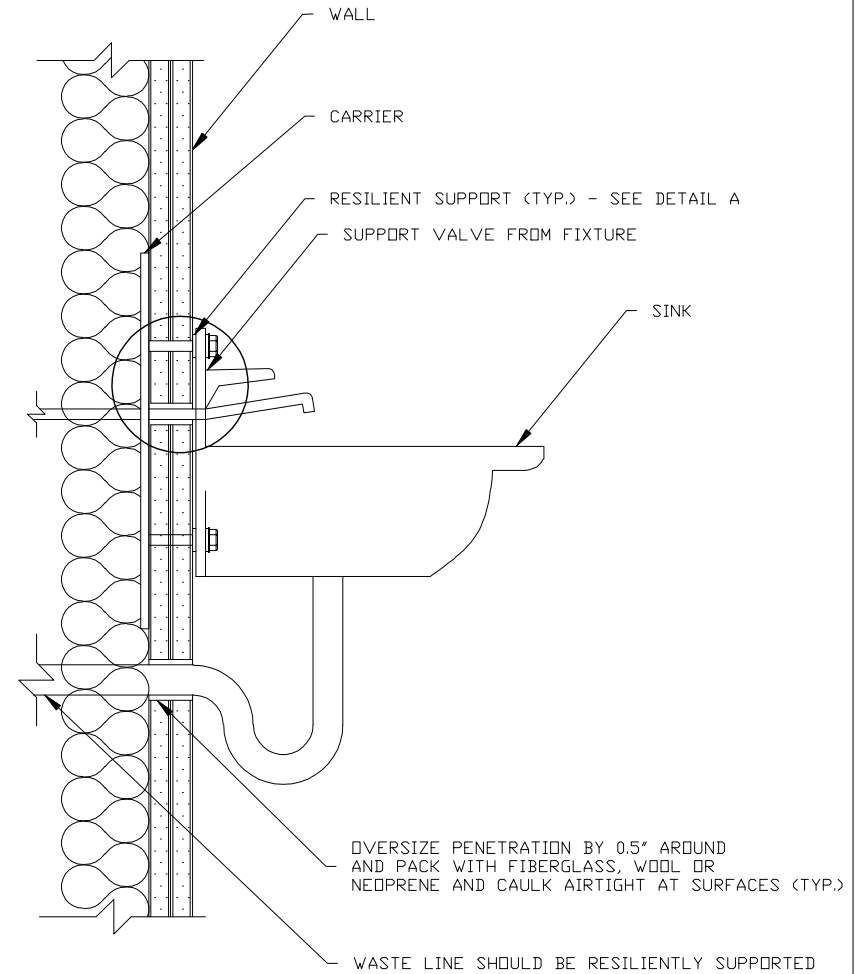


DETAIL A



NOTES: THE CONDITION IS SHOWN FOR WALL WITH NO RESILIENT CHANNELS.
 IF WALL HAS RESILIENT CHANNELS, CONTACT BY PIPES AND FASTENERS
 MUST BE AVOIDED.
 USE STUD FINDERS TO LOCATE RESILIENT CHANNELS AND FRAMING.
 IF SINK IS PART OF CABINET, SEE CABINET ISOLATION DETAIL ALSO.



SINK ACOUSTICAL ISOLATION



LISTEN ACOUSTICS, INC.

5144 W. Sunset Drive
 Lake Oswego, OR 97035
 (503) 241-5255

1100 Dexter Ave. N.
 Suite 100
 Seattle, WA 98109
 (206) 223-1390

DRAWING SCALE:

NTS

DRAWN BY:

AM

CHECKED BY:

NTC

DATE:

03/10/09

FILE:

VAUX DETAILS.DWG