

ROOF ELECTRICAL PLAN—BUILDING 'A'
 SCALE: 1/4"=1'-0"

	MERIT ELECTRIC OF PORTLAND, INC. P. O. BOX 2020 SPRING LAKE, OR 97136 TEL 503-657-9222 FAX 503-657-0044		DEI Electrical Consultants, Inc. 222 West Commercial, Suite 100 Tualatin, OR 97140 TEL 503-741-1122 FAX 503-741-1122
	<p>Copyright Ankrum Moisan Associated Architects 2004</p> <p>BUILDING A ROOF ELECT. PLAN</p>		

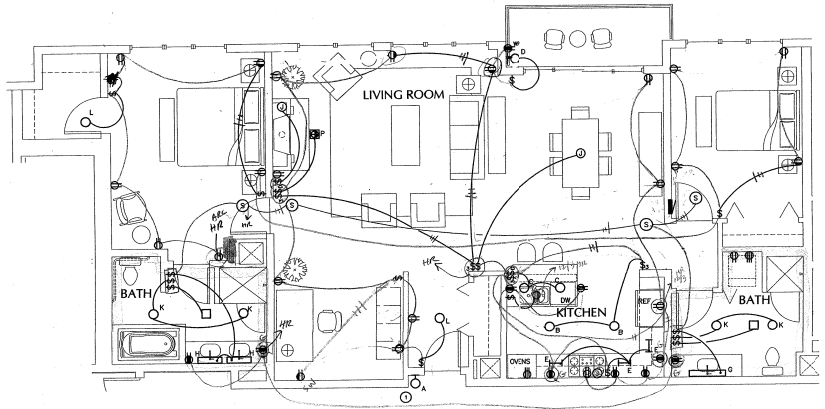
TCR - THE VAUX
 TRAMMELL CROW RESIDENTIAL

MARK	DATE

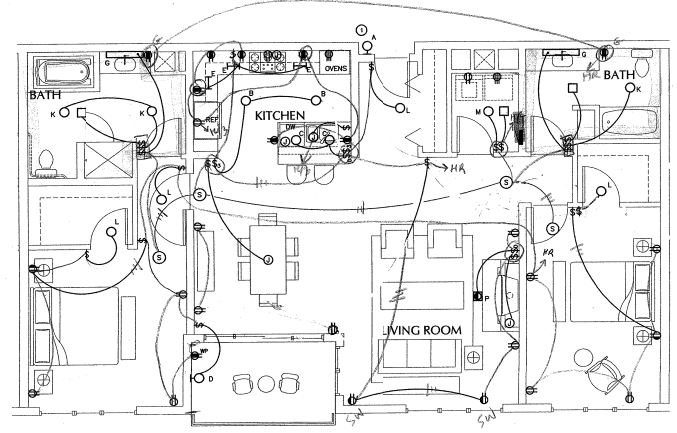
DATE: 03.10.05
 JOB: 041100
 FILE:
 DRAWN: BFC
 CHECKED: RJO



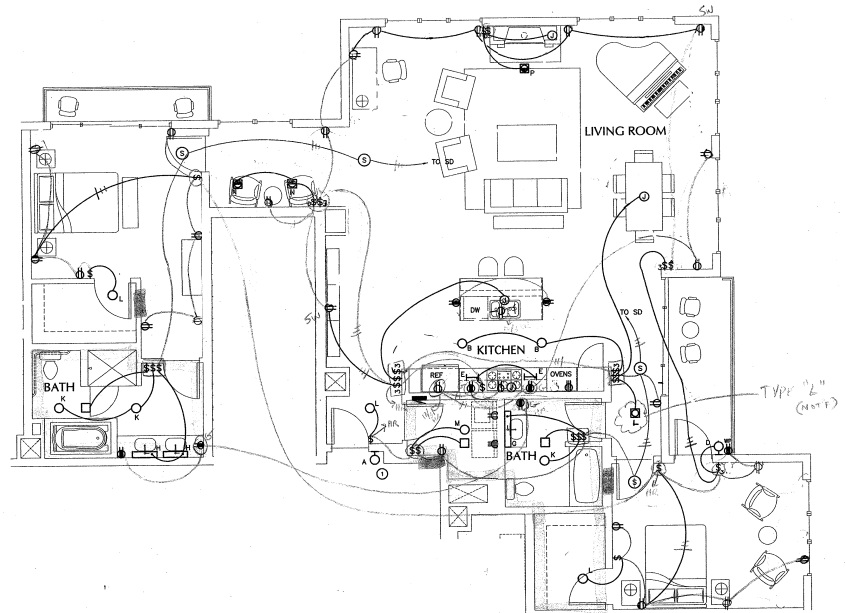
ANKRUM MOISAN
 ARCHITECTURE INTERIORS PLANNING
 505 W. WISCONSIN ST. SUITE 200
 MILWAUKEE, WI 53233-2710 | TEL: 414.224.2710 | WWW.AMK.COM



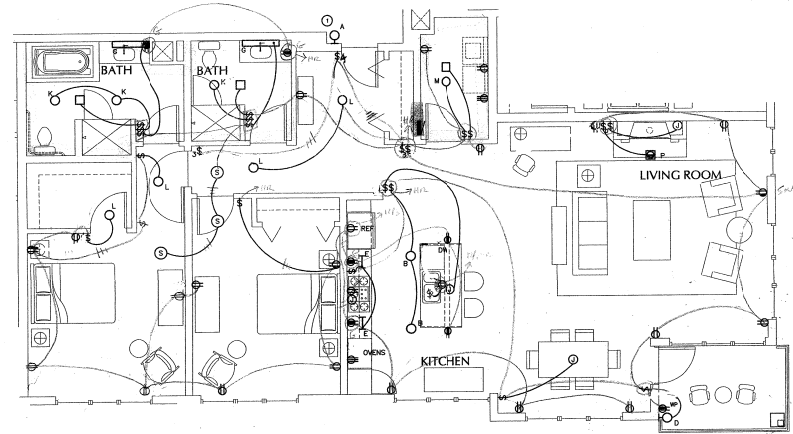
P-8-PENTHOUSE UNIT
 SCALE: 1/4" = 1'-0"



P-9-PENTHOUSE UNIT
 SCALE: 1/4" = 1'-0"



P-10-PENTHOUSE UNIT
 SCALE: 1/4" = 1'-0"



P-11-PENTHOUSE UNIT
 SCALE: 1/4" = 1'-0"

GENERAL NOTES:

- ① 'A' TYPE LIGHT FIXTURE AT UNIT ENTRANCE SHALL BE CONNECTED TO UNIT GENERAL LIGHTING CIRCUIT-UNBUNDLED.
- ② EFS IN BATHROOMS & UTILITY ROOMS ARE PROVIDED BY OTHERS. SWITCHES SHOWN SHALL BE BY ELECTRICAL AS AN ADD-ALTERNATE.



MERIT ELECTRIC
 OF WISCONSIN, INC.
 505 W. WISCONSIN ST.
 SUITE 200
 MILWAUKEE, WI 53233-2710
 TEL: 414.224.2710



DEI Electrical Consultants, Inc.
 120 West Superior, Suite 400
 Superior, WI 54981-8002
 TEL: 920.221.1100
 FAX: 920.221.1100

TCR - THE VAUX
 TRAMMELL CROW RESIDENTIAL

DATE: 03.10.05
 JOB: 041100
 FILE:
 DRAWN: EFC
 CHECKED: RJD

COPYRIGHT ANKRUM MOISAN
 ASSOCIATED ARCHITECTS AP
 TYPICAL UNITS
 ELECTRICAL
 PLAN

