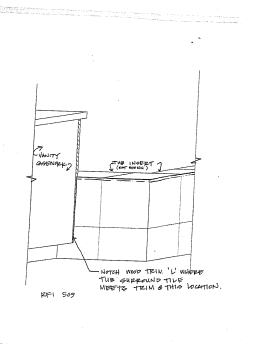
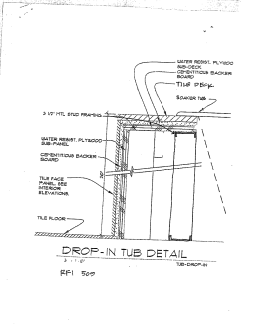
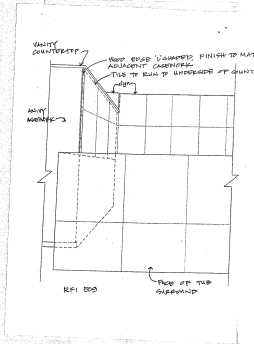


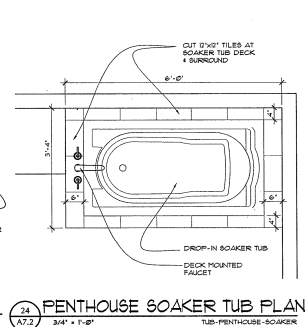
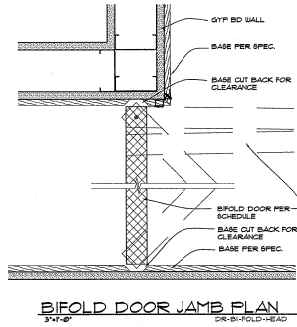
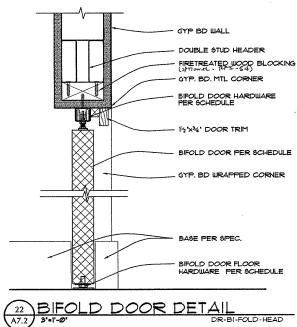
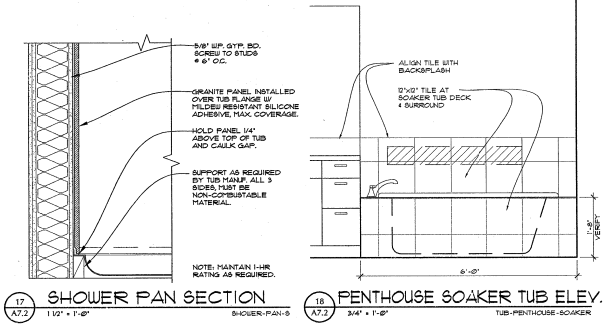
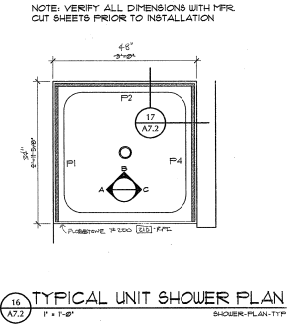
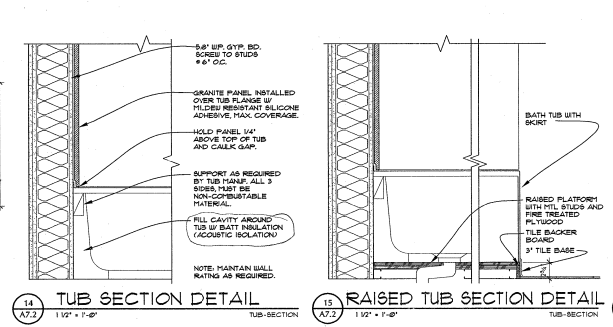
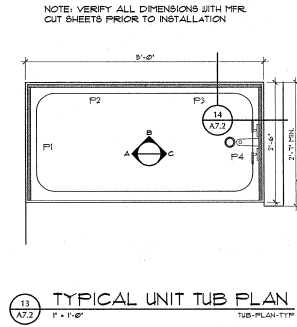
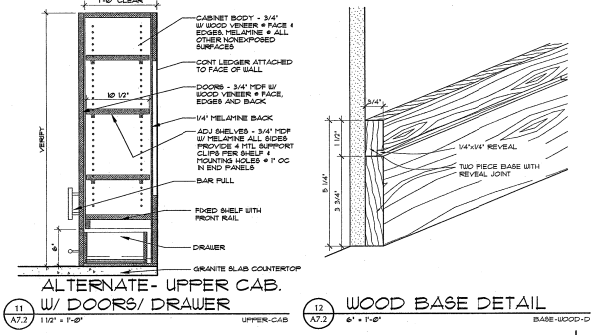
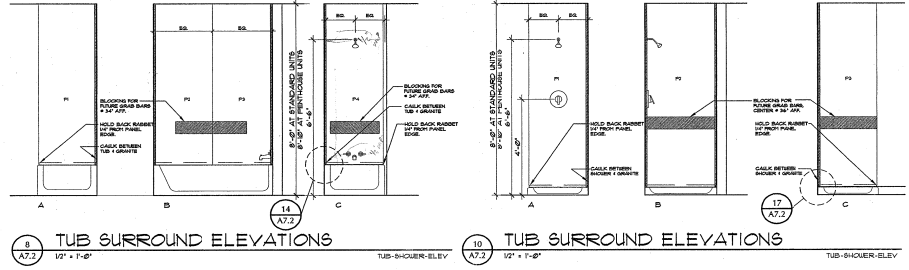
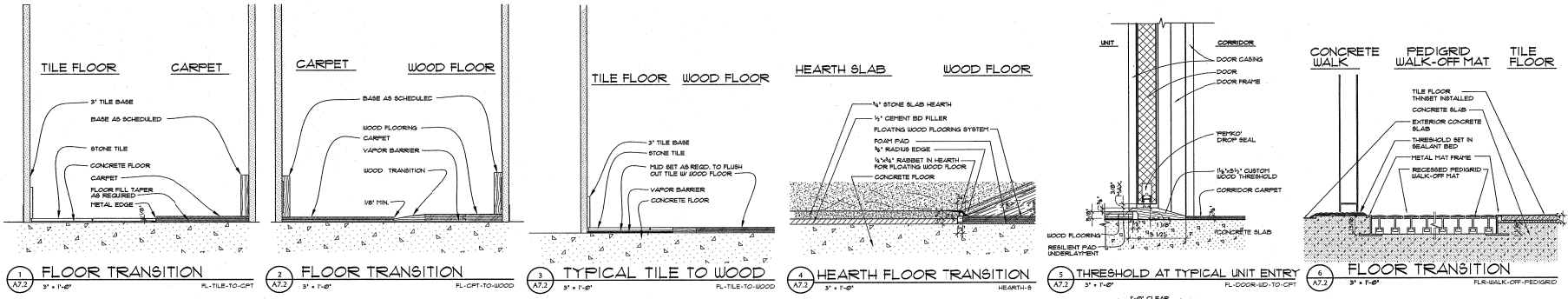
ICR Request For Information: 000

Submit Date: 04/14/2010

RFI No.	000	RFI Status	Open
RFI Description	RFI 000		
RFI Category	RFI	RFI Sub-Category	RFI
RFI Date	04/14/2010	RFI Expires	04/14/2010
RFI Author	ICR	RFI Reviewer	ICR
RFI Status	Open	RFI Response	None
RFI Type	RFI	RFI Sub-Type	RFI
RFI Sub-Type	RFI	RFI Sub-Sub-Type	RFI

1. Please provide detailed drawings and all callouts that are necessary to fabricate and install the tub.
 2. Please provide details of the tub's connection to the wall and floor, including the tub's support structure.
 3. Please provide details of the tub's connection to the wall and floor, including the tub's support structure.
 4. Please provide details of the tub's connection to the wall and floor, including the tub's support structure.





MARK	DATE

DATE: 03.10.05
JOB: 041100
FILE: A7.02
DRAWN: SN
CHECKED:

COPYRIGHT ANAKROM MOISAN ASSOCIATED ARCHITECTS 2004
INTERIOR DETAILS

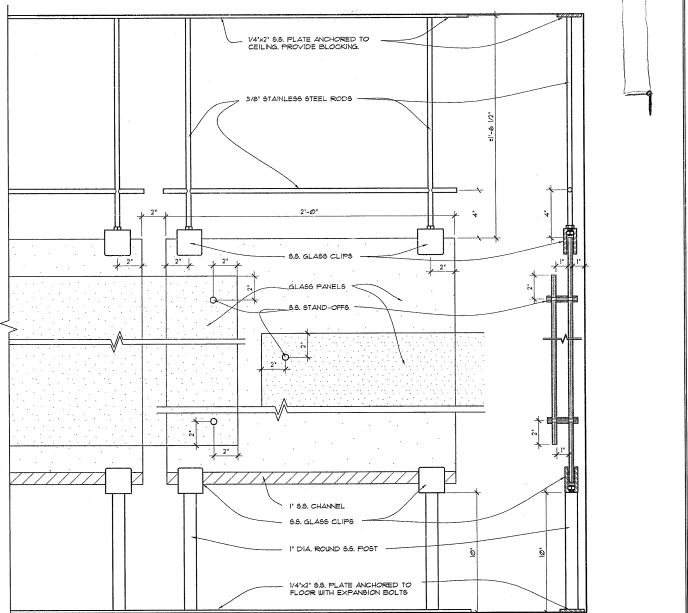
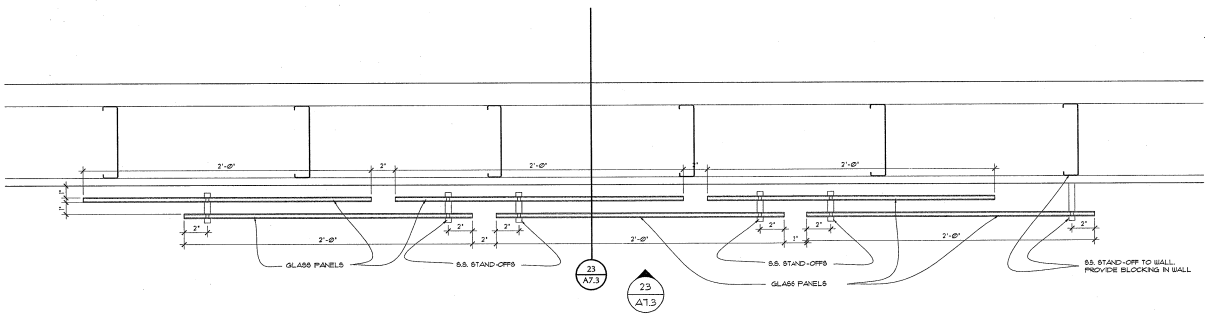
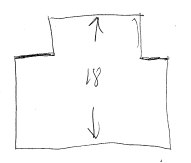
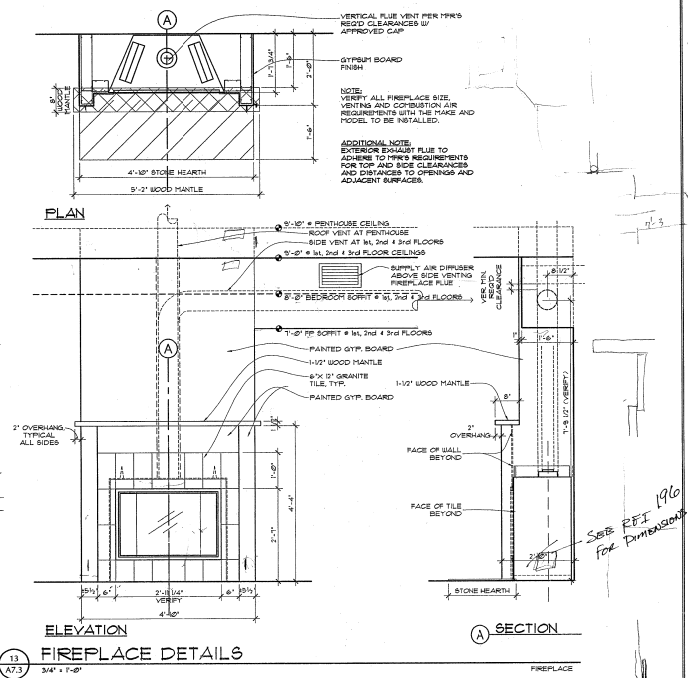
TCR
The Construction Register

Request For Information - 100
Issue: March 20, 2012

NO. 123456
Project Name: THE VAUX
Address: 12345 SW MACADAM AVE, PORTLAND, OR 97219
Contractor: ANKROM MOISAN ARCHITECTURE
Architect: ANKROM MOISAN ARCHITECTURE
Engineer: TCR - THE VAUX
Other: [blank]

DATE: 03.10.05
JOB: G41100
FILE: A7.03
DRAWING: 5N
CHECKED: [blank]

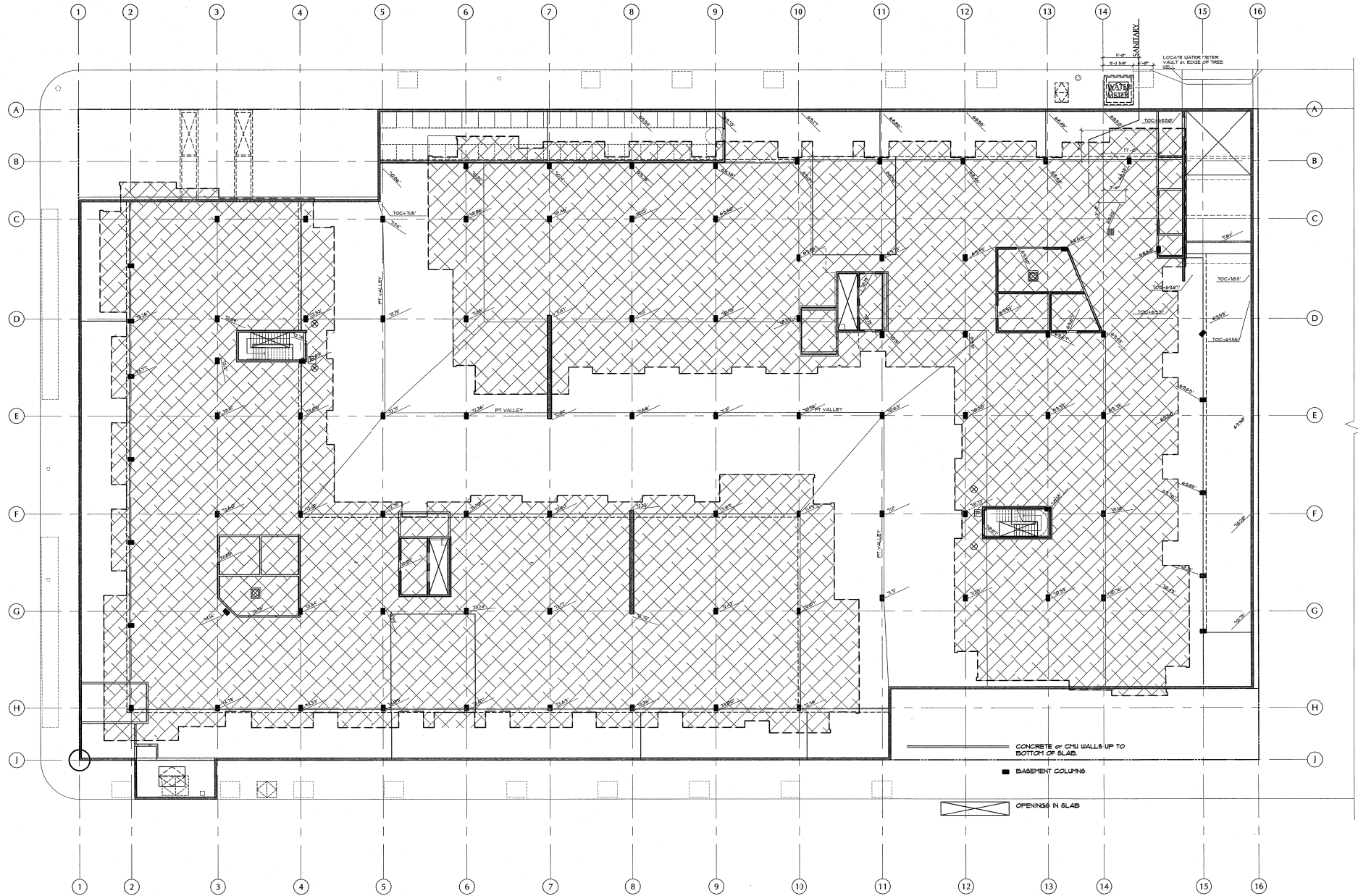
MARK	DATE



19
LOBBY GLASS PANEL PLAN
3' x 1'-0"

23
LOBBY GLASS PANELS
SECTION
3' x 1'-0"

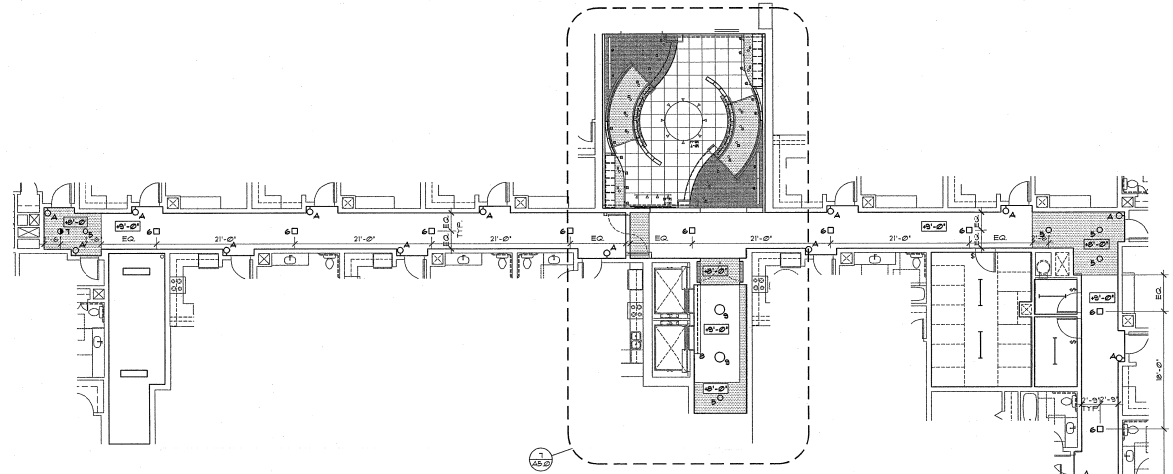
NOTE:
DECORATIVE GLASS PANEL ASSEMBLY IS BIDDER DESIGNED.
REFER TO DETAILS FOR DESIGN INTENT ONLY. SUBMIT FOR
STRUCTURAL ENGINEERING AND PROVIDE SHOP DUGS.



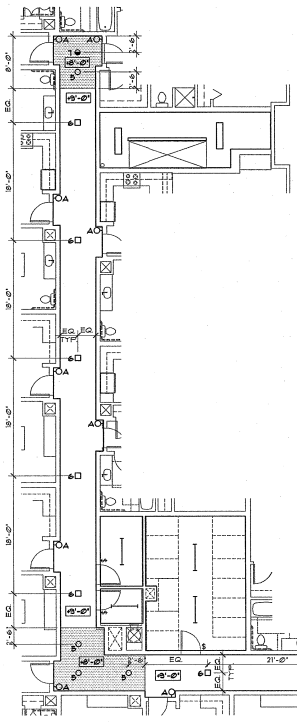
MARK	DATE

DATE: 03.10.05
JOB: 041100
FILE: AB-00
DRAWN:
CHECKED:
COPYRIGHT ANKROM MOISAN ASSOCIATED ARCHITECTS 2004

REGISTERED ARCHITECT ROBERT WAMBER, LICENSE NO. 52457
REGISTERED ARCHITECT MICHAEL HARRIS, LICENSE NO. 52467



2 FIRST FLOOR BLDG "B" REFLECTED CEILING PLAN
 1/8"=1'-0"



1 FIRST FLOOR BLDG "A" REFLECTED CEILING PLAN
 1/8"=1'-0"

WALL KEY:

- CEILING / WALL EDGE
- SOFFITED AREAS AS INDICATED ON PLANS
- SURFACE-MOUNT CEILING LIGHT FIXTURE
- WALL-MOUNT LIGHT FIXTURES
- RECESSED CEILING LIGHT FIXTURE
- WALL-WASH LIGHT FIXTURE
- SOFFIT EDGES

MARK	DATE

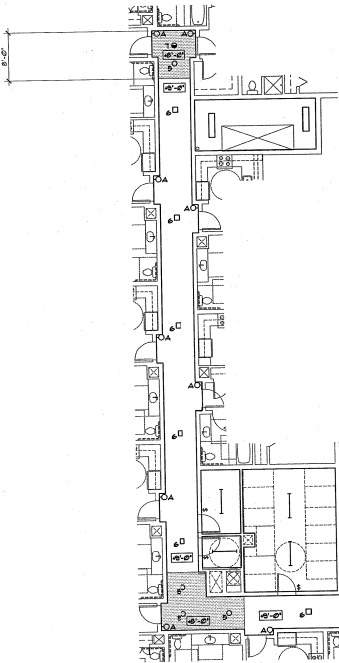
DATE: 03.10.05
 JOB: 041100
 FILE: A801
 DRAWN:
 CHECKED:

COPYRIGHT ANKROM MOISAN
 ASSOCIATED ARCHITECTS/2004
**FIRST FLOOR
 BLDG A & B
 REFLECTED
 CEILING PLANS**

TCR
 Request For Information - 021
 Details: Refer to RFI number

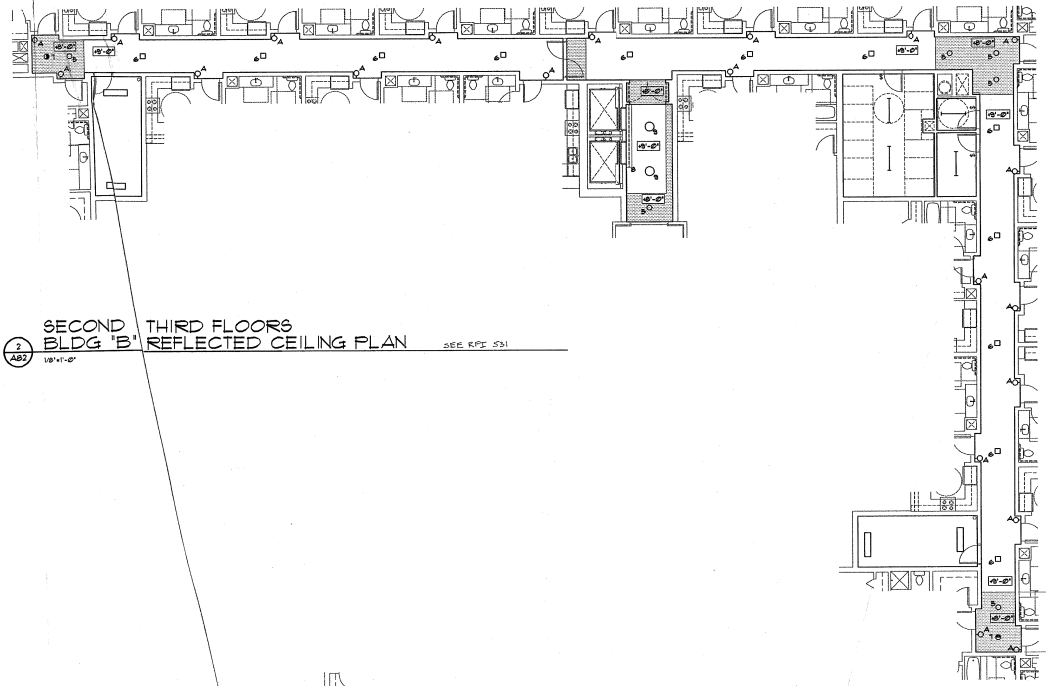
NO.	DESCRIPTION	DATE	BY	APP. BY
1	ISSUED FOR INFORMATION	03/10/05		
2	ISSUED FOR INFORMATION	03/10/05		

PROJECT: TCR - THE VAUX
 ARCHITECT: ANKROM MOISAN ARCHITECTURE INTERIORS PLANNING
 PROJECT MANAGER: ROBERT HANMER
 PROJECT ARCHITECT: TERRY HANSEN
 PROJECT ENGINEER: JEFFREY HANSEN
 PROJECT DESIGNER: JEFFREY HANSEN
 PROJECT CHECKER: JEFFREY HANSEN
 PROJECT APPROVER: JEFFREY HANSEN



**SECOND & THIRD FLOORS
 BLDG 'A' REFLECTED CEILING PLAN**
 10'-11" x 0"

**SECOND & THIRD FLOORS
 BLDG 'B' REFLECTED CEILING PLAN**
 2 SEE RFI 021
 10'-11" x 0"



NOTE: REFER TO SHEET A61 FOR DIMENSIONING OF LIGHT FIXTURE LOCATIONS

WALL KEY:

- CEILING / WALL EDGE
- SOFFITTED AREAS AS INDICATED ON PLANS
- SURFACE-MOUNT CEILING LIGHT FIXTURE
- WALL-MOUNT LIGHT FIXTURES
- RECESSED CEILING LIGHT FIXTURE
- WALL-WASH LIGHT FIXTURE
- SOFFIT EDGES

MARK	DATE

DATE: 03.10.05
 JOB: 041100
 FILE: A6.02
 DRAWN:
 CHECKED:

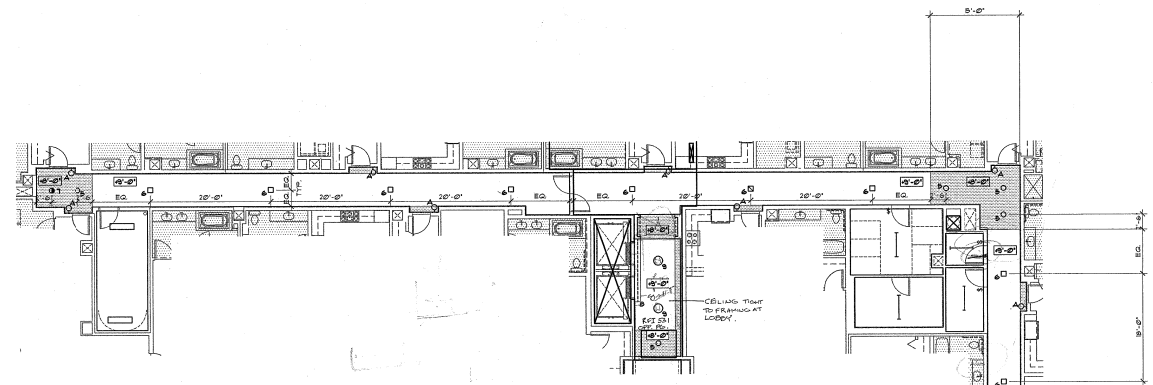
COPYRIGHT ANKROM MOISAN
 ASSOCIATED ARCHITECTS, 2004

TCR
 TCR ARCHITECTURE

Request for Information 301
 Date: January 17, 2018

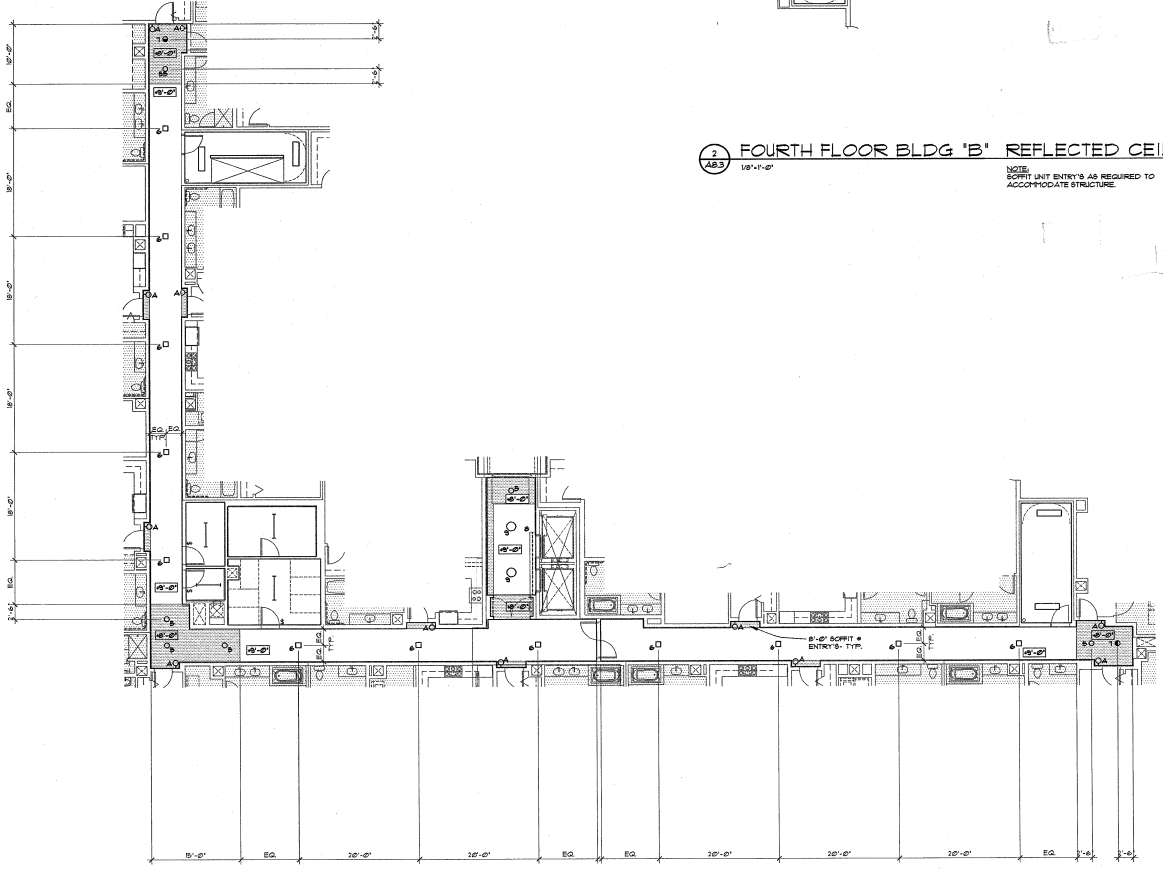
No.	Description	Quantity	Unit	Notes
1	PROVIDE AND INSTALL	1	UNIT	SEE NOTES
2	PROVIDE AND INSTALL	1	UNIT	SEE NOTES
3	PROVIDE AND INSTALL	1	UNIT	SEE NOTES
4	PROVIDE AND INSTALL	1	UNIT	SEE NOTES
5	PROVIDE AND INSTALL	1	UNIT	SEE NOTES
6	PROVIDE AND INSTALL	1	UNIT	SEE NOTES
7	PROVIDE AND INSTALL	1	UNIT	SEE NOTES
8	PROVIDE AND INSTALL	1	UNIT	SEE NOTES
9	PROVIDE AND INSTALL	1	UNIT	SEE NOTES
10	PROVIDE AND INSTALL	1	UNIT	SEE NOTES
11	PROVIDE AND INSTALL	1	UNIT	SEE NOTES
12	PROVIDE AND INSTALL	1	UNIT	SEE NOTES
13	PROVIDE AND INSTALL	1	UNIT	SEE NOTES
14	PROVIDE AND INSTALL	1	UNIT	SEE NOTES
15	PROVIDE AND INSTALL	1	UNIT	SEE NOTES
16	PROVIDE AND INSTALL	1	UNIT	SEE NOTES
17	PROVIDE AND INSTALL	1	UNIT	SEE NOTES
18	PROVIDE AND INSTALL	1	UNIT	SEE NOTES
19	PROVIDE AND INSTALL	1	UNIT	SEE NOTES
20	PROVIDE AND INSTALL	1	UNIT	SEE NOTES
21	PROVIDE AND INSTALL	1	UNIT	SEE NOTES
22	PROVIDE AND INSTALL	1	UNIT	SEE NOTES
23	PROVIDE AND INSTALL	1	UNIT	SEE NOTES
24	PROVIDE AND INSTALL	1	UNIT	SEE NOTES
25	PROVIDE AND INSTALL	1	UNIT	SEE NOTES
26	PROVIDE AND INSTALL	1	UNIT	SEE NOTES
27	PROVIDE AND INSTALL	1	UNIT	SEE NOTES
28	PROVIDE AND INSTALL	1	UNIT	SEE NOTES
29	PROVIDE AND INSTALL	1	UNIT	SEE NOTES
30	PROVIDE AND INSTALL	1	UNIT	SEE NOTES
31	PROVIDE AND INSTALL	1	UNIT	SEE NOTES
32	PROVIDE AND INSTALL	1	UNIT	SEE NOTES
33	PROVIDE AND INSTALL	1	UNIT	SEE NOTES
34	PROVIDE AND INSTALL	1	UNIT	SEE NOTES
35	PROVIDE AND INSTALL	1	UNIT	SEE NOTES
36	PROVIDE AND INSTALL	1	UNIT	SEE NOTES
37	PROVIDE AND INSTALL	1	UNIT	SEE NOTES
38	PROVIDE AND INSTALL	1	UNIT	SEE NOTES
39	PROVIDE AND INSTALL	1	UNIT	SEE NOTES
40	PROVIDE AND INSTALL	1	UNIT	SEE NOTES
41	PROVIDE AND INSTALL	1	UNIT	SEE NOTES
42	PROVIDE AND INSTALL	1	UNIT	SEE NOTES
43	PROVIDE AND INSTALL	1	UNIT	SEE NOTES
44	PROVIDE AND INSTALL	1	UNIT	SEE NOTES
45	PROVIDE AND INSTALL	1	UNIT	SEE NOTES
46	PROVIDE AND INSTALL	1	UNIT	SEE NOTES
47	PROVIDE AND INSTALL	1	UNIT	SEE NOTES
48	PROVIDE AND INSTALL	1	UNIT	SEE NOTES
49	PROVIDE AND INSTALL	1	UNIT	SEE NOTES
50	PROVIDE AND INSTALL	1	UNIT	SEE NOTES
51	PROVIDE AND INSTALL	1	UNIT	SEE NOTES
52	PROVIDE AND INSTALL	1	UNIT	SEE NOTES
53	PROVIDE AND INSTALL	1	UNIT	SEE NOTES
54	PROVIDE AND INSTALL	1	UNIT	SEE NOTES
55	PROVIDE AND INSTALL	1	UNIT	SEE NOTES
56	PROVIDE AND INSTALL	1	UNIT	SEE NOTES
57	PROVIDE AND INSTALL	1	UNIT	SEE NOTES
58	PROVIDE AND INSTALL	1	UNIT	SEE NOTES
59	PROVIDE AND INSTALL	1	UNIT	SEE NOTES
60	PROVIDE AND INSTALL	1	UNIT	SEE NOTES
61	PROVIDE AND INSTALL	1	UNIT	SEE NOTES
62	PROVIDE AND INSTALL	1	UNIT	SEE NOTES
63	PROVIDE AND INSTALL	1	UNIT	SEE NOTES
64	PROVIDE AND INSTALL	1	UNIT	SEE NOTES
65	PROVIDE AND INSTALL	1	UNIT	SEE NOTES
66	PROVIDE AND INSTALL	1	UNIT	SEE NOTES
67	PROVIDE AND INSTALL	1	UNIT	SEE NOTES
68	PROVIDE AND INSTALL	1	UNIT	SEE NOTES
69	PROVIDE AND INSTALL	1	UNIT	SEE NOTES
70	PROVIDE AND INSTALL	1	UNIT	SEE NOTES
71	PROVIDE AND INSTALL	1	UNIT	SEE NOTES
72	PROVIDE AND INSTALL	1	UNIT	SEE NOTES
73	PROVIDE AND INSTALL	1	UNIT	SEE NOTES
74	PROVIDE AND INSTALL	1	UNIT	SEE NOTES
75	PROVIDE AND INSTALL	1	UNIT	SEE NOTES
76	PROVIDE AND INSTALL	1	UNIT	SEE NOTES
77	PROVIDE AND INSTALL	1	UNIT	SEE NOTES
78	PROVIDE AND INSTALL	1	UNIT	SEE NOTES
79	PROVIDE AND INSTALL	1	UNIT	SEE NOTES
80	PROVIDE AND INSTALL	1	UNIT	SEE NOTES
81	PROVIDE AND INSTALL	1	UNIT	SEE NOTES
82	PROVIDE AND INSTALL	1	UNIT	SEE NOTES
83	PROVIDE AND INSTALL	1	UNIT	SEE NOTES
84	PROVIDE AND INSTALL	1	UNIT	SEE NOTES
85	PROVIDE AND INSTALL	1	UNIT	SEE NOTES
86	PROVIDE AND INSTALL	1	UNIT	SEE NOTES
87	PROVIDE AND INSTALL	1	UNIT	SEE NOTES
88	PROVIDE AND INSTALL	1	UNIT	SEE NOTES
89	PROVIDE AND INSTALL	1	UNIT	SEE NOTES
90	PROVIDE AND INSTALL	1	UNIT	SEE NOTES
91	PROVIDE AND INSTALL	1	UNIT	SEE NOTES
92	PROVIDE AND INSTALL	1	UNIT	SEE NOTES
93	PROVIDE AND INSTALL	1	UNIT	SEE NOTES
94	PROVIDE AND INSTALL	1	UNIT	SEE NOTES
95	PROVIDE AND INSTALL	1	UNIT	SEE NOTES
96	PROVIDE AND INSTALL	1	UNIT	SEE NOTES
97	PROVIDE AND INSTALL	1	UNIT	SEE NOTES
98	PROVIDE AND INSTALL	1	UNIT	SEE NOTES
99	PROVIDE AND INSTALL	1	UNIT	SEE NOTES
100	PROVIDE AND INSTALL	1	UNIT	SEE NOTES

Notes:
 1. ALL WORK SHALL BE IN ACCORDANCE WITH THE LATEST EDITIONS OF THE BUILDING CODES OF OREGON AND THE INTERNATIONAL CODES.
 2. THE CONTRACTOR SHALL BE RESPONSIBLE FOR OBTAINING ALL NECESSARY PERMITS AND APPROVALS.
 3. THE CONTRACTOR SHALL BE RESPONSIBLE FOR OBTAINING ALL NECESSARY MATERIALS AND LABORERS.
 4. THE CONTRACTOR SHALL BE RESPONSIBLE FOR OBTAINING ALL NECESSARY UTILITIES AND SERVICES.
 5. THE CONTRACTOR SHALL BE RESPONSIBLE FOR OBTAINING ALL NECESSARY INSURANCE AND BONDS.
 6. THE CONTRACTOR SHALL BE RESPONSIBLE FOR OBTAINING ALL NECESSARY ACCESS AND EGRESS.
 7. THE CONTRACTOR SHALL BE RESPONSIBLE FOR OBTAINING ALL NECESSARY SIGNAGE AND MARKING.
 8. THE CONTRACTOR SHALL BE RESPONSIBLE FOR OBTAINING ALL NECESSARY SAFETY MEASURES.
 9. THE CONTRACTOR SHALL BE RESPONSIBLE FOR OBTAINING ALL NECESSARY PROTECTIVE MEASURES.
 10. THE CONTRACTOR SHALL BE RESPONSIBLE FOR OBTAINING ALL NECESSARY CLEANUP AND RESTORATION MEASURES.
 11. THE CONTRACTOR SHALL BE RESPONSIBLE FOR OBTAINING ALL NECESSARY RECORD DRAWINGS.
 12. THE CONTRACTOR SHALL BE RESPONSIBLE FOR OBTAINING ALL NECESSARY AS-BUILT DRAWINGS.
 13. THE CONTRACTOR SHALL BE RESPONSIBLE FOR OBTAINING ALL NECESSARY PHOTOGRAPHS AND VIDEOS.
 14. THE CONTRACTOR SHALL BE RESPONSIBLE FOR OBTAINING ALL NECESSARY MEASUREMENTS AND SURVEYS.
 15. THE CONTRACTOR SHALL BE RESPONSIBLE FOR OBTAINING ALL NECESSARY CALCULATIONS AND ANALYSES.
 16. THE CONTRACTOR SHALL BE RESPONSIBLE FOR OBTAINING ALL NECESSARY TESTING AND INSPECTIONS.
 17. THE CONTRACTOR SHALL BE RESPONSIBLE FOR OBTAINING ALL NECESSARY MAINTENANCE AND REPAIRS.
 18. THE CONTRACTOR SHALL BE RESPONSIBLE FOR OBTAINING ALL NECESSARY TRAINING AND EDUCATION.
 19. THE CONTRACTOR SHALL BE RESPONSIBLE FOR OBTAINING ALL NECESSARY SUPPORT AND ASSISTANCE.
 20. THE CONTRACTOR SHALL BE RESPONSIBLE FOR OBTAINING ALL NECESSARY COOPERATION AND COLLABORATION.



2 FOURTH FLOOR BLDG 'B' REFLECTED CEILING PLAN
 18'-11'-0"

NOTE:
 SOFFIT UNIT ENTRY'S AS REQUIRED TO ACCOMMODATE STRUCTURE.



1 FOURTH FLOOR BLDG 'A' REFLECTED CEILING PLAN
 18'-11'-0"

NOTE:
 SOFFIT UNIT ENTRY'S AS REQUIRED TO ACCOMMODATE STRUCTURE.

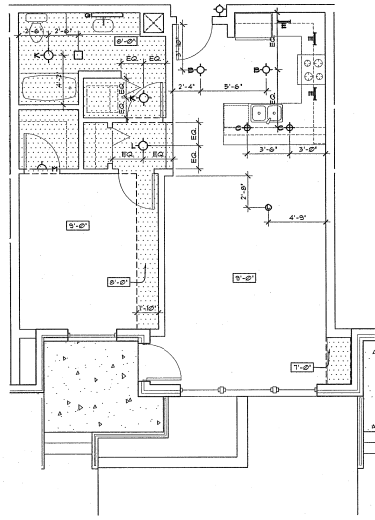
WALL KEY:

- CEILING / WALL EDGE
- SOFFITTED AREAS AS INDICATED ON PLANS
- SURFACE-MOUNT CEILING LIGHT FIXTURE
- WALL-MOUNT LIGHT FIXTURE
- RECESSED CEILING LIGHT FIXTURE
- WALL-WASH LIGHT FIXTURE
- SOFFIT EDGES

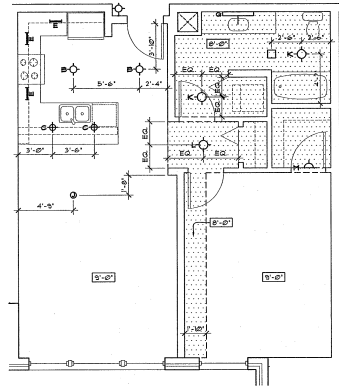
MARK	DATE

DATE: 03.10.05
 JOB: 041100
 FILE: A848
 DRAWN: _____
 CHECKED: _____

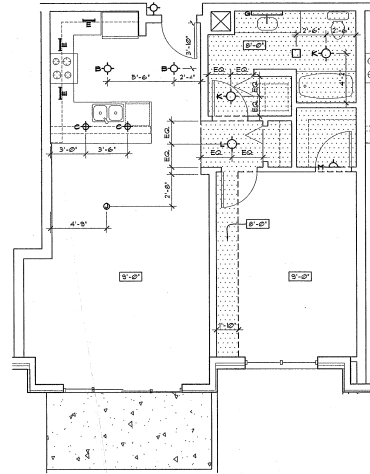
THESE DOCUMENTS HAVE BEEN PREPARED BY ANKROM MOISAN ARCHITECTURE AND ASSOCIATES AND ARE NOT TO BE REPRODUCED OR TRANSMITTED IN ANY FORM OR BY ANY MEANS, ELECTRONIC OR MECHANICAL, INCLUDING PHOTOCOPYING, RECORDING, OR BY ANY INFORMATION STORAGE AND RETRIEVAL SYSTEM, WITHOUT THE WRITTEN PERMISSION OF ANKROM MOISAN ARCHITECTURE AND ASSOCIATES.



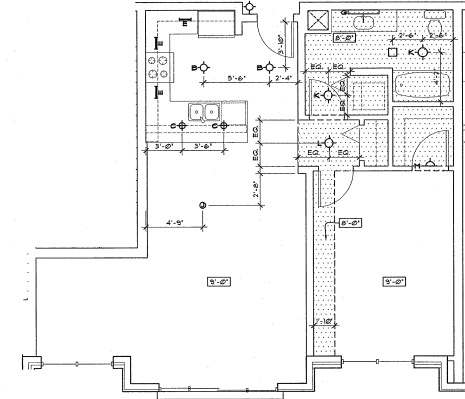
1 A-1-1- R.C.P. - 1 BEDROOM UNIT
 1/4"=1'-0"



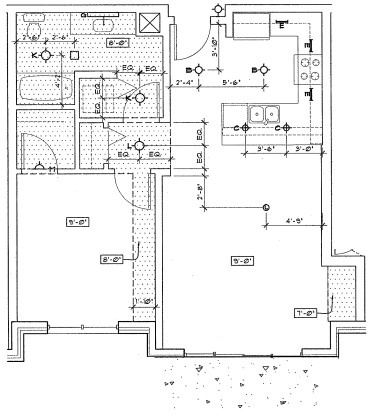
2 A-2-1- R.C.P. - 1 BEDROOM UNIT
 1/4"=1'-0"



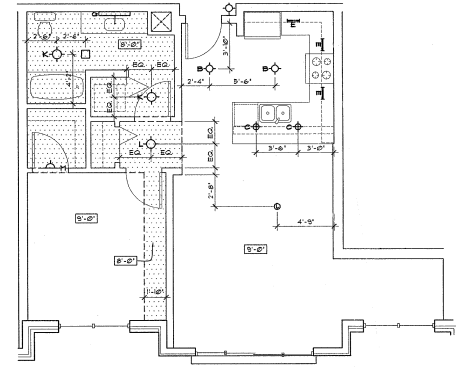
3 A-3-1- R.C.P. - 1 BEDROOM UNIT
 1/4"=1'-0"



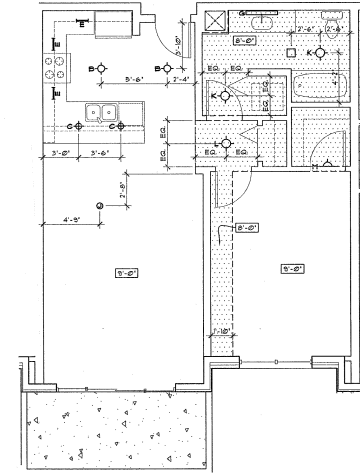
4 A-3-2- R.C.P. - 1 BEDROOM UNIT
 1/4"=1'-0"



5 A-4-1- R.C.P. - 1 BEDROOM UNIT
 1/4"=1'-0"



6 A-4-2- R.C.P. - 1 BEDROOM UNIT
 1/4"=1'-0"



7 A-5-1- R.C.P. - 1 BEDROOM UNIT
 1/4"=1'-0"

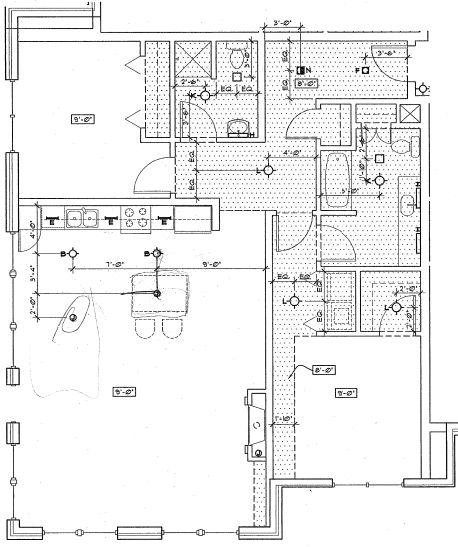
GENERAL NOTE

1. DOTTED AREAS SHOW DROPPED CEILINGS. SEE TYPICAL FLOOR CEILING ASSEMBLY SHEET 44.0 AND DETAILS FOR ADDITIONAL INFORMATION.
2. SORTED AREAS INDICATE NOMINAL HEIGHT. VERIFY CLEARANCE REQUIREMENT AND ACTUAL FINAL HEIGHT WITH MECH HVAC CLEARANCE & FINISHING REQUIREMENTS.
3. CEILING * NON-SORTED AREAS IS THE FINISHED BOTTOM OF THE FLOOR, CEILING OR ROOF CEILING FINE ASSEMBLY. FIGURES IN THESE AREAS TO BE SURFACE INDICATED.

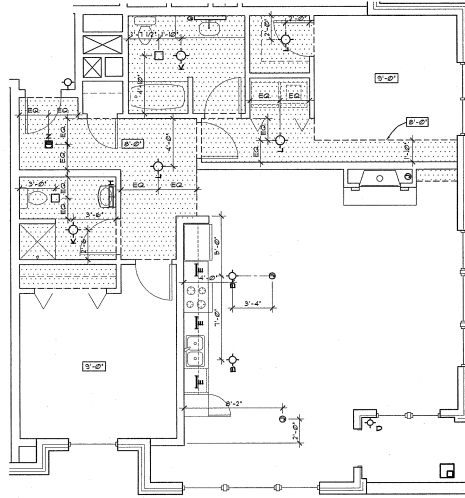
MARK	DATE

DATE: 03.10.05
 JOB: 041100
 FILE: A8-04
 DRAWING:
 CHECKED:

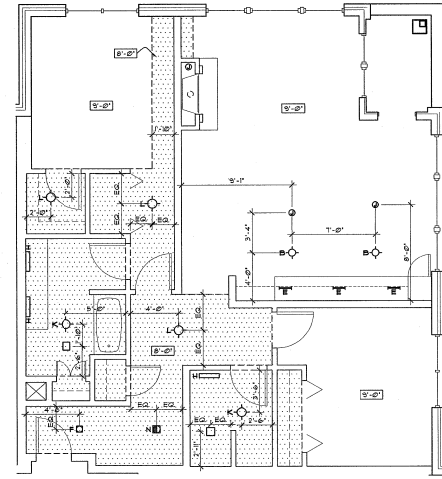
COPYRIGHT ANKROM MOISAN ASSOCIATED ARCHITECTS
ONE BEDROOM UNIT R.C.P. PLANS



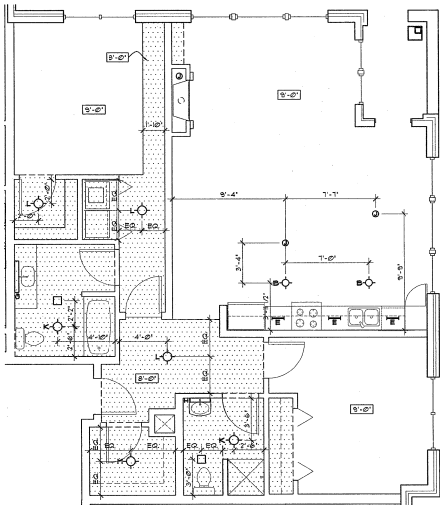
1 B-1-1- R.C.P. - 2 BEDROOM UNIT
14'x11'-0"



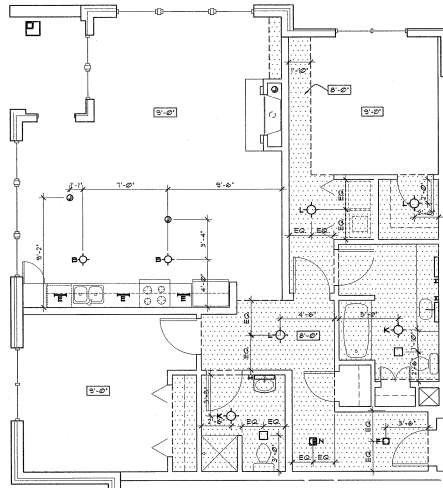
2 B-2-1- R.C.P. - 2 BEDROOM UNIT
14'x11'-0"



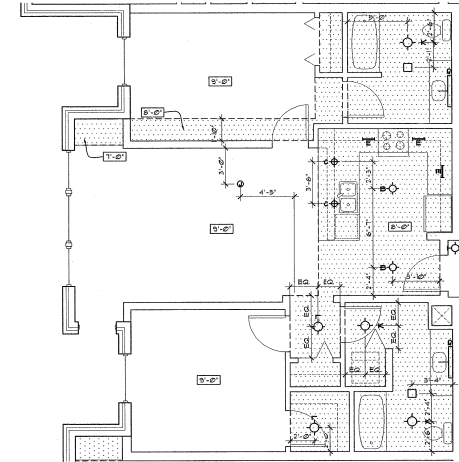
3 B-3-1- R.C.P. - 2 BEDROOM UNIT
14'x11'-0"



4 B-4-1- R.C.P. - 2 BEDROOM UNIT
14'x11'-0"



5 B-5-1- R.C.P. - 2 BEDROOM UNIT
14'x11'-0"



6 B-6-1- R.C.P. - 2 BEDROOM UNIT
14'x11'-0"

- GENERAL NOTE**
1. DOTTED AREAS SHOW DROPPED CEILINGS. SEE TYPICAL F.R.V. CEILING ASSEMBLY SHEET A4.0 AND DETAILS FOR ADDITIONAL INFORMATION.
 2. DOTTED AREAS INDICATE NORMAL HEIGHT VESTIBULE CLEARANCE REQUIREMENT AND ACTUAL FINAL HEIGHT WITH HIGH HVAC CLEARANCE & MOUNTING REQUIREMENTS.
 3. CEILING IN NON-DOTTED AREAS IS THE FINISHED BOTTOM OF THE FLOOR CEILING OR ROOF CEILING FINE ASSEMBLY. FIXTURES IN THESE AREAS TO BE SURFACE MOUNTED.



ANKROM MOISAN
ARCHITECTURE INTERIORS PLANNING
6720 SW MACADAM, SUITE 100, PORTLAND, OREGON 97219
PHONE 503.243.2710 | FAX 503.243.2770 | WWW.AMCO.COM

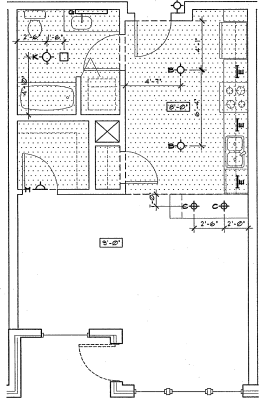
TCR - THE VAUX
TRAMMELL CROW RESIDENTIAL

MARK	DATE

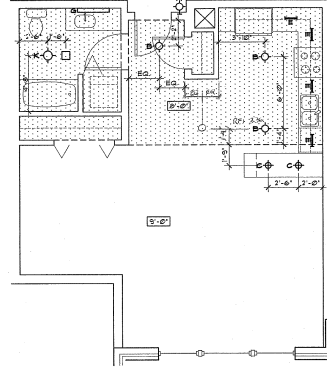
DATE: 03.10.05
JOB: 041100
FILE: A848
DRAWING:
CHECKED:
COPYRIGHT ANKROM MOISAN ASSOCIATED ARCHITECTS/2004

TWO BEDROOM UNIT R.C.P. PLANS

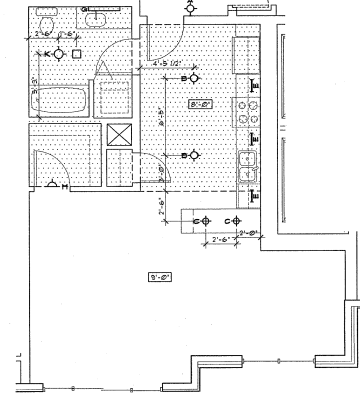
PROJECT: ANKROM MOISAN ARCHITECTURE
DRAWN BY: ANKROM MOISAN ARCHITECTURE



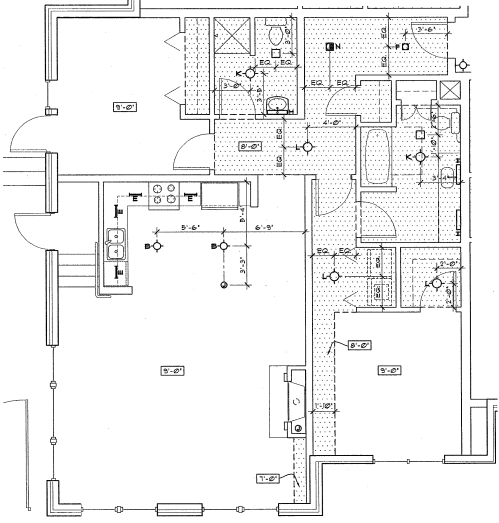
1 C-1-1- R.C.P. - LOFT UNIT
14'-11"-0"



2 C-2-1- R.C.P. - LOFT UNIT
14'-11"-0"



3 C-3-1- R.C.P. - LOFT UNIT
14'-11"-0"



4 B-1-2 - R.C.P. - TWO BEDROOM UNIT
14'-11"-0" 11 FLOOR, BLDG B

GENERAL NOTE

1. DOTTED AREAS SHOW DROPPED CEILING.
SEE TYPICAL FLOOR CEILING ASSEMBLY SHEET A4.6 AND DETAILS FOR ADDITIONAL INFORMATION.
2. DOTTED AREAS INDICATE NORMAL HEIGHT. VERIFY CLEARANCE REQUIREMENT AND ACTUAL FINAL HEIGHT WITH MECH. HVAC CLEARANCE & FINISHING REQUIREMENTS.
3. CEILING & NON-DOTTED AREAS IS THE FINISHED BOTTOM OF THE FLOOR CEILING OR ROOF CEILING FINE ASSEMBLY. PICTURED IN THESE AREAS TO BE SURFACE POINTED.

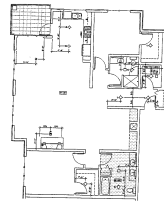
MARK	DATE

DATE: 01.10.05
JOB: 041100
FILE: AN-06
DRAWN:
CHECKED:

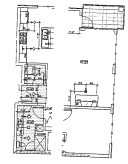
COPYRIGHT ANKROM MOISAN ASSOCIATED ARCHITECTS, 2004

LOFT UNIT
R.C.P. PLANS

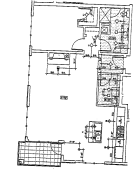
NOTED: REFER TO MANUFACTURER'S SPECIFICATIONS FOR MATERIALS AND FINISHES.



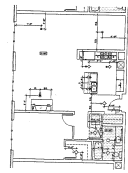
201 - R.C.P. - PENTHOUSE UNIT



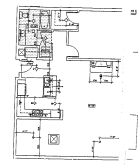
202 - R.C.P. - PENTHOUSE UNIT



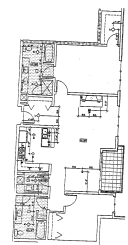
203 - R.C.P. - PENTHOUSE UNIT



204 - R.C.P. - PENTHOUSE UNIT



205 - R.C.P. - PENTHOUSE UNIT



206 - R.C.P. - PENTHOUSE UNIT

NOTES:
 1. SEE ARCHITECTURAL DRAWINGS FOR FINISHES AND MATERIALS.
 2. SEE MECHANICAL DRAWINGS FOR HVAC SYSTEMS.
 3. SEE ELECTRICAL DRAWINGS FOR WIRING AND PANELS.
 4. SEE PLUMBING DRAWINGS FOR PIPING AND FIXTURES.
 5. SEE STRUCTURAL DRAWINGS FOR FOUNDATION AND FLOORING.

100% CONSTRUCTION DOCUMENTS AB.7



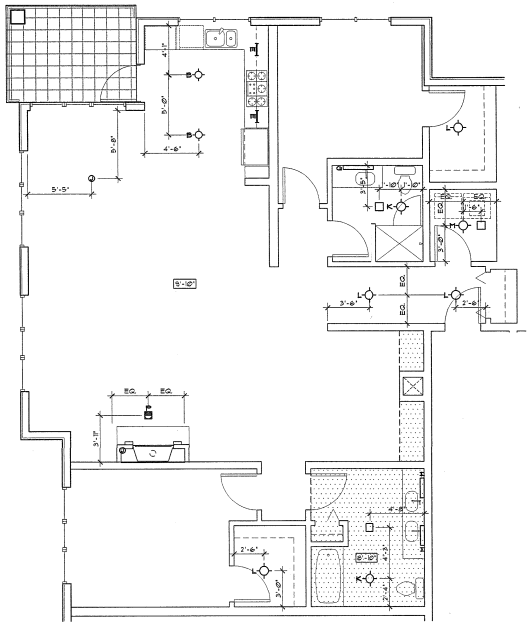
TCR - THE VALUX
 ARCHITECTURAL SERVICES

TCR Request for Information - 04.17.17
 Details: General Contractor

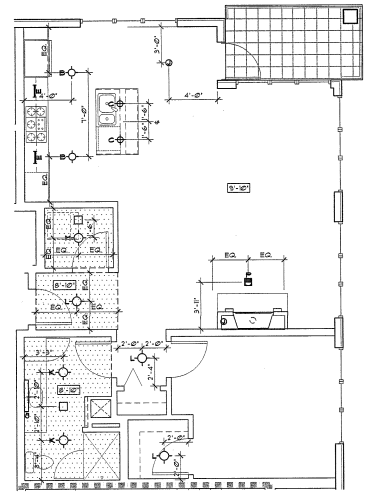
PROJECT: 100% CONSTRUCTION DOCUMENTS FOR 206 - R.C.P. - PENTHOUSE UNIT
 PROJECT NO.: 100% CONSTRUCTION DOCUMENTS FOR 206 - R.C.P. - PENTHOUSE UNIT
 PROJECT LOCATION: 100% CONSTRUCTION DOCUMENTS FOR 206 - R.C.P. - PENTHOUSE UNIT
 PROJECT OWNER: 100% CONSTRUCTION DOCUMENTS FOR 206 - R.C.P. - PENTHOUSE UNIT
 PROJECT ARCHITECT: 100% CONSTRUCTION DOCUMENTS FOR 206 - R.C.P. - PENTHOUSE UNIT
 PROJECT GENERAL CONTRACTOR: 100% CONSTRUCTION DOCUMENTS FOR 206 - R.C.P. - PENTHOUSE UNIT

QUESTIONS: 100% CONSTRUCTION DOCUMENTS FOR 206 - R.C.P. - PENTHOUSE UNIT
 ANSWERS: 100% CONSTRUCTION DOCUMENTS FOR 206 - R.C.P. - PENTHOUSE UNIT

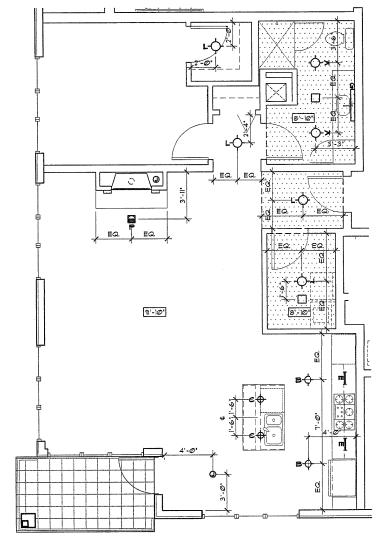
DATE: 100% CONSTRUCTION DOCUMENTS FOR 206 - R.C.P. - PENTHOUSE UNIT
 TIME: 100% CONSTRUCTION DOCUMENTS FOR 206 - R.C.P. - PENTHOUSE UNIT



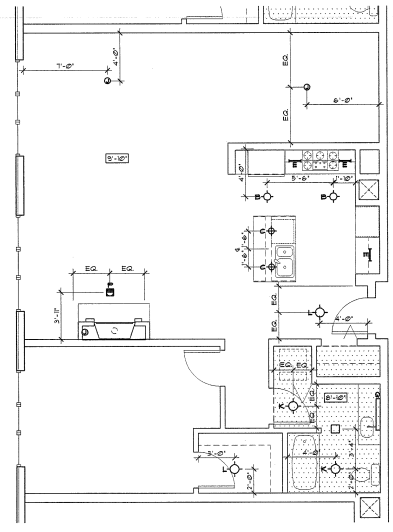
1 P-1 - R.C.P. - PENTHOUSE UNIT
 1/4"=1'-0"



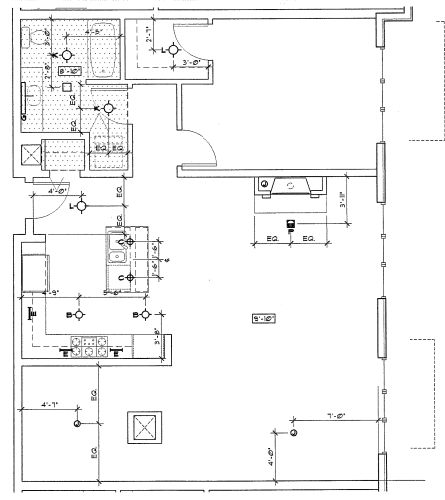
2 P-2A - R.C.P. - PENTHOUSE UNIT
 1/4"=1'-0"



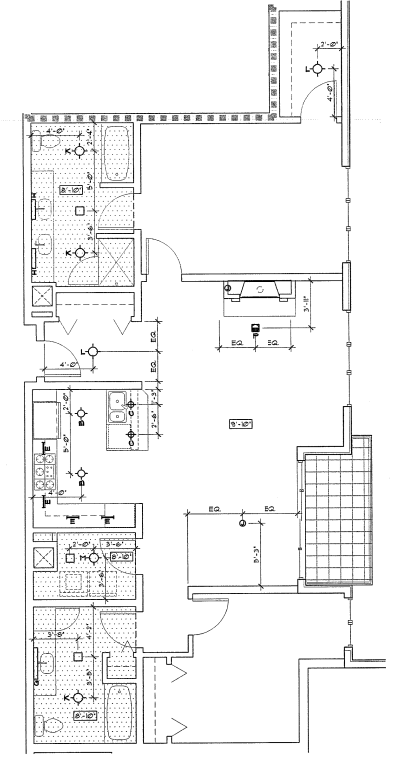
3 P-2B - R.C.P. - PENTHOUSE UNIT
 1/4"=1'-0"



4 P-3A - R.C.P. - PENTHOUSE UNIT
 1/4"=1'-0"



5 P-3B - R.C.P. - PENTHOUSE UNIT
 1/4"=1'-0"



6 P-4 - R.C.P. - PENTHOUSE UNIT
 1/4"=1'-0"

GENERAL NOTE

- 1) DOTTED AREAS SHOW DROPPED CEILING.
- 2) SOFFIT AREAS INDICATE NORMAL HEIGHT VERIFY CLEARANCE REQUIREMENT AND ACTUAL FINAL HEIGHT WITH MECH. HVAC CLEARANCE + MOUNTING REQUIREMENTS.
- 3) CEILING + NON-SOFFIT AREAS IS THE FINISHED BOTTOM OF THE FLOOR/CEILING OR ROOF CEILING RISE ASSEMBLY. FIXTURES IN THESE AREAS TO BE SURFACE MOUNTED.

MARK	DATE

DATE: 03.10.05
 JOB: 041100
 FILE: AM07
 DRAWN:
 CHECKED:

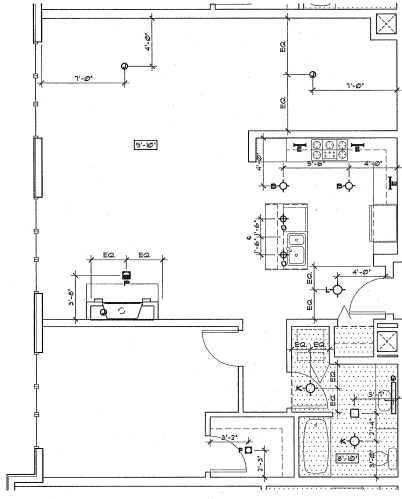
PROPERTY ANKROM MOISAN ASSOCIATED ARCHITECTS 2004
 PENTHOUSE UNIT
 R.C.P. PLANS

PLOTTED: MARK MOISAN/PORTLAND/03/27/05
 DATE: 03/27/05 11:00 AM
 PLOT: 100% CONSTRUCTION DOCUMENTS

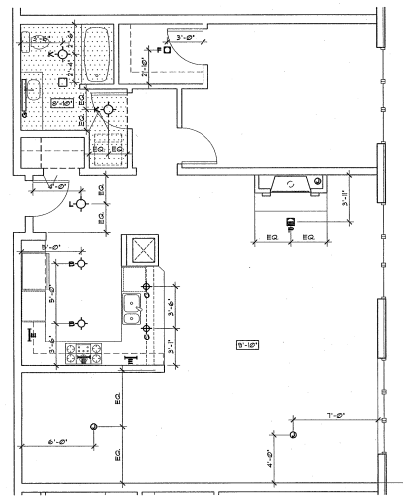
MARK	DATE

DATE: 03.10.05
 JOB: 041100
 FILE: A8-08
 DRAWN:
 CHECKED:

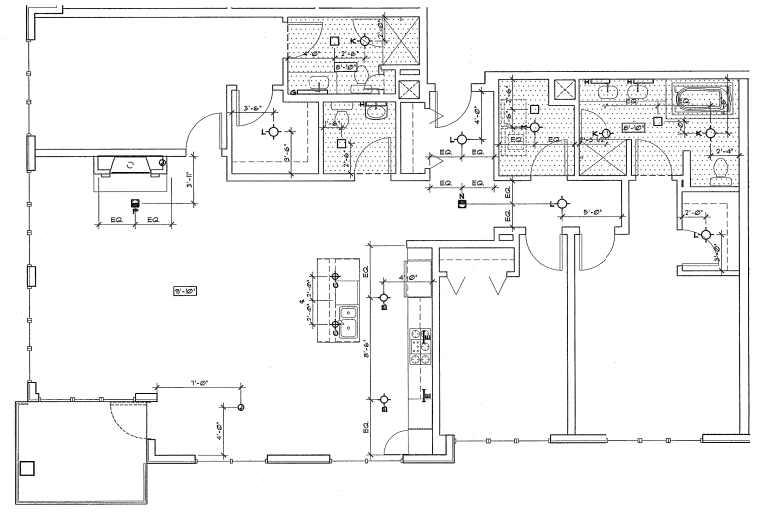
COPYRIGHT ANKROM MOISAN
 ASSOCIATED ARCHITECTS 2004
 PENTHOUSE
 UNIT
 R.C.P. PLANS



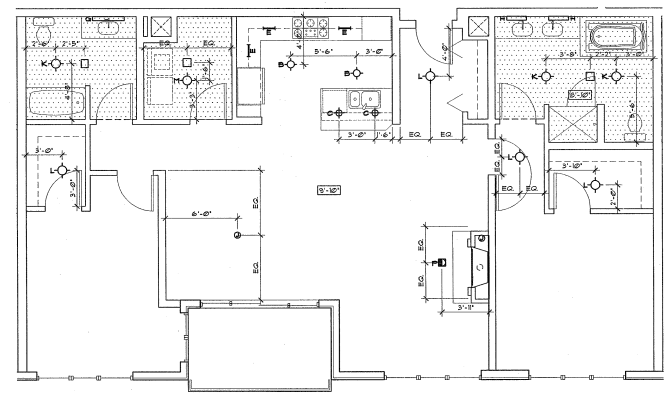
1 P-5A - R.C.P. - PENTHOUSE UNIT
 A8.8 14'4"x17'0"



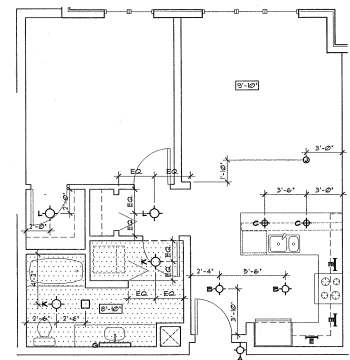
2 P-5B - R.C.P. - PENTHOUSE UNIT
 A8.8 14'4"x17'0"



3 P-6 - R.C.P. - PENTHOUSE UNIT
 A8.8 14'4"x17'0"



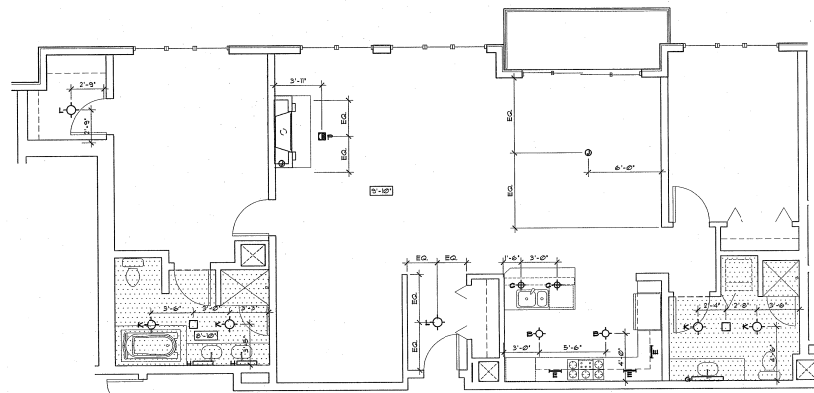
4 P-1 - R.C.P. - PENTHOUSE UNIT
 A8.8 14'4"x17'0"



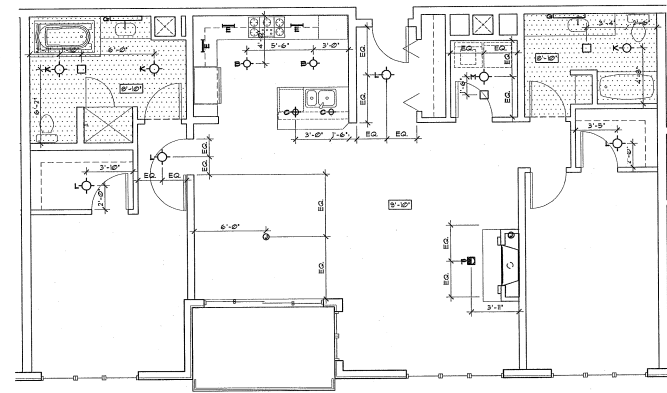
5 A-2.4 - R.C.P. - PENTHOUSE UNIT
 A8.8 14'4"x17'0"

GENERAL NOTE
 1. DOTTED AREAS SHOW DROPPED CEILINGS. SEE TYPICAL FLOOR CEILING ASSEMBLY SHEET A-4.6 AND DETAILS FOR ADDITIONAL INFORMATION.
 2. SOFFITED AREAS INDICATE NOMINAL HEIGHT. VERIFY CLEARANCE REQUIREMENT AND ACTUAL FINAL HEIGHT WITH MECH. HVAC CLEARANCE & FINISHING REQUIREMENTS.
 3. CEILING & NON-SOFFITED AREAS IN THE FINISHED BOTTOM OF THE FLOOR/CEILING OR ROOF/CEILING FINE ASSEMBLY. PICTURES IN THESE AREAS TO BE SURFACE MOUNTED.

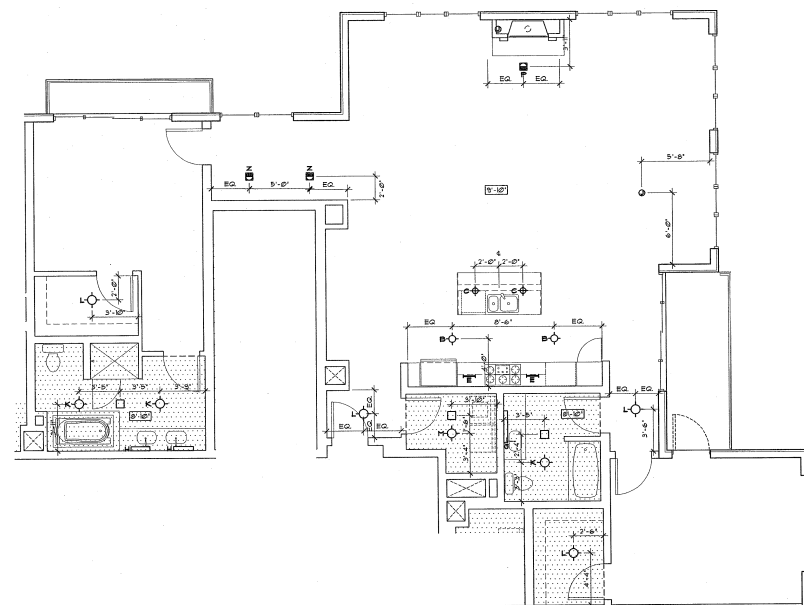
PLANS BY ANKROM MOISAN ARCHITECTURE
 6725 SW MACADAM, SUITE 100, PORTLAND, OREGON 97219
 503-245-7100



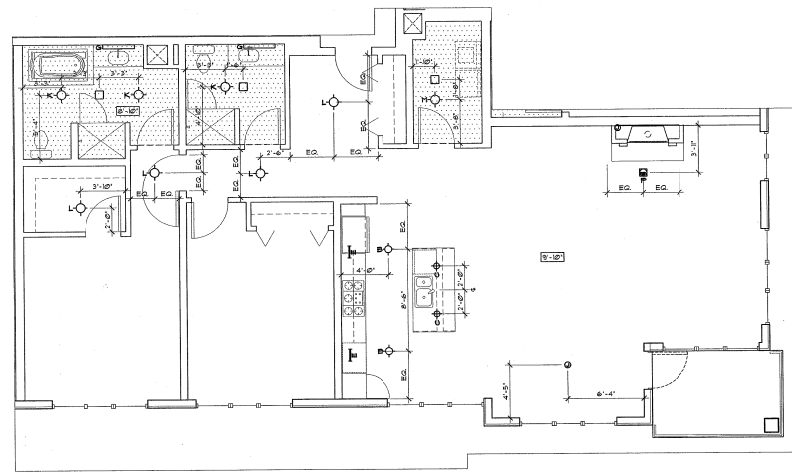
1 P-8 - R.C.P. - PENTHOUSE UNIT
 14'-11" x 8'



2 P-9 - R.C.P. - PENTHOUSE UNIT
 14'-11" x 8'



3 P-10 - R.C.P. - PENTHOUSE UNIT
 14'-11" x 8'



4 P-11 - R.C.P. - PENTHOUSE UNIT
 14'-11" x 8'

GENERAL NOTE
 1. DOTTED AREAS SHOW DROPPED CEILINGS.
 SEE TYPICAL FLOOR CEILING ANNOTATION SHEET A4.0 AND DETAILS FOR ADDITIONAL INFORMATION.
 2. HATCHED AREAS INDICATE NORMAL HEIGHT. VERIFY CLEARANCE REQUIREMENT AND ACTUAL FINAL HEIGHT WITH HEIGHT HVAC CLEARANCE & MOUNTING REQUIREMENTS.
 3. CEILING & NON-HATCHED AREAS IS THE FINISHED BOTTOM OF THE FLOOR CEILING OR ROOF CEILING FINE ASSEMBLY. FIXTURES IN THESE AREAS TO BE SURFACE MOUNTED.

PLOTTED: WEDNESDAY, MAR 03, 2010 10:22:37 AM
 PLOTFILE: TCR_PENTHOUSE.rvt

MARK	DATE

DATE: 03.10.05
 JOB: 041100
 FILE: AB-09
 DRAWN:
 CHECKED:

COPYRIGHT ANKROM MOISAN
 ASSOCIATED ARCHITECTS 2004

PENTHOUSE
 UNIT
 R.C.P. PLANS

CARPET KEY:

- C2 - AS SHOWN
- C3 - AS SHOWN
- C4 - AS SHOWN AND AS NOTED
- C5 - 12' WIDTH

CONCRETE KEY:

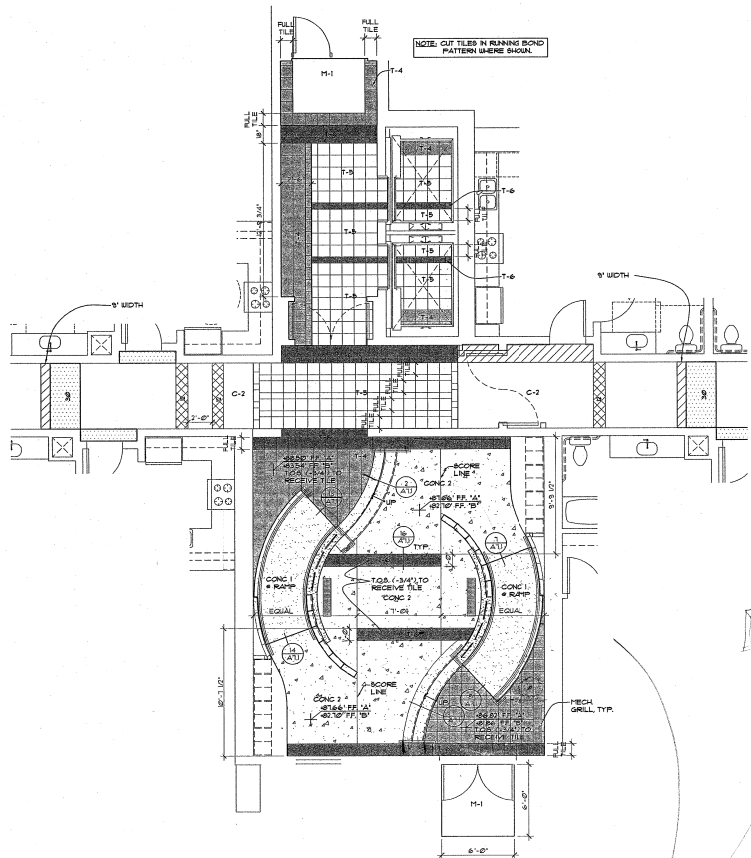
- CONC 1
- CONC 2

TILE KEY:

- TILE 4
- TILE 5
- TILE 6

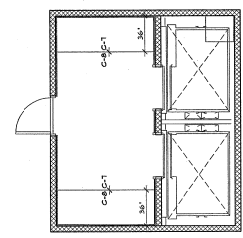
WALK-OFF MAT

- W1 - 36" X 60" MAT TYP. (SEE NOTES 110 CONC. P.L. IS RAMP, CASE: R2)

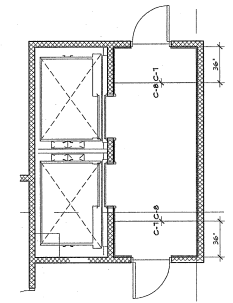


1 ENLARGED FIRST FLOOR BLDG 'A' & 'B' LOBBY FLOOR FINISH PLAN
1/4"=1'-0"

2 ENLARGED LOBBY 'A' BASEMENT FLOOR FINISH PLAN
1/4"=1'-0"



3 ENLARGED LOBBY 'B' BASEMENT FLOOR FINISH PLAN
1/4"=1'-0"



ANKRUM MOISAN
ARCHITECTURE INTERIORS PLANNING
6720 SW MACADAM SUITE 100, PORTLAND, OREGON 97219
PHONE 503-245-7710 | FAX 503-245-7710 | WWW.AMCO.COM

TCR - THE VAUX
TRAMMELL CROW RESIDENTIAL

MARK	DATE

DATE: 03.10.05
JOB: 041100
FILE: A9-00
DRAWN:
CHECKED:

COPYRIGHT ANKRUM MOISAN ASSOCIATED ARCHITECTS 2004

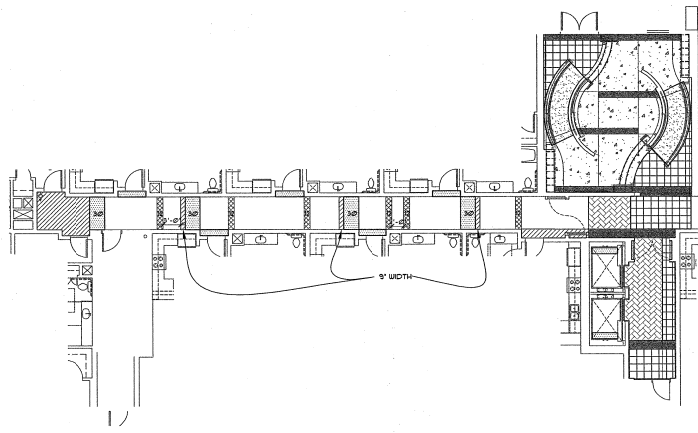
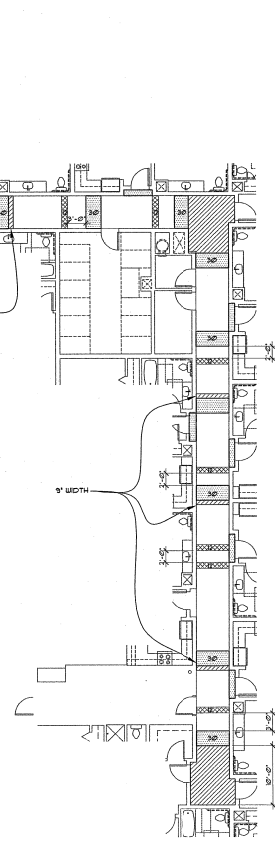
ENLARGED BLDG A & B LOBBY FINISH PLANS

A9.0

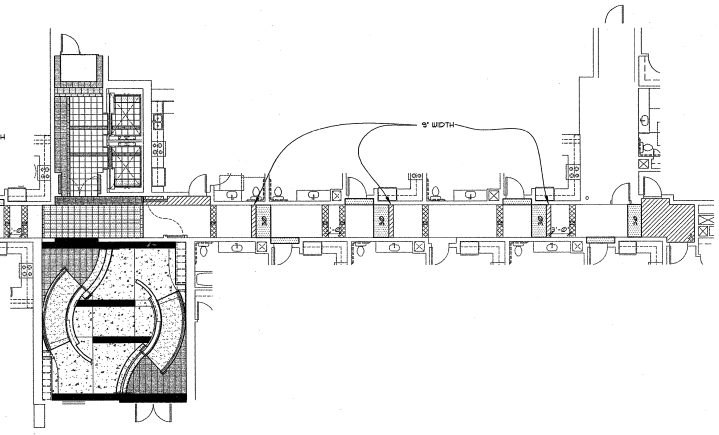
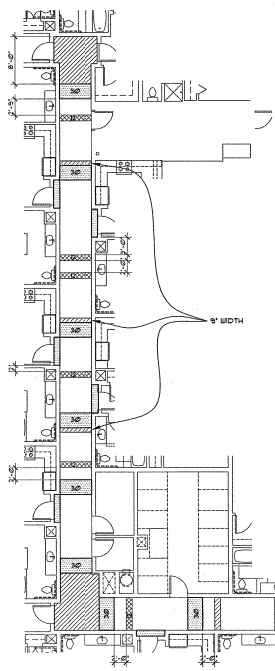
MARK	DATE

DATE: 03.10.05
 JOB: 041100
 FILE: A901
 DRAWN:
 CHECKED:










COPYRIGHT ANKROM MOISAN
 ASSOCIATED ARCHITECTS, 2004



2 FIRST FLOOR BLDG "B" FINISH PLAN
 1/8" = 1'-0"



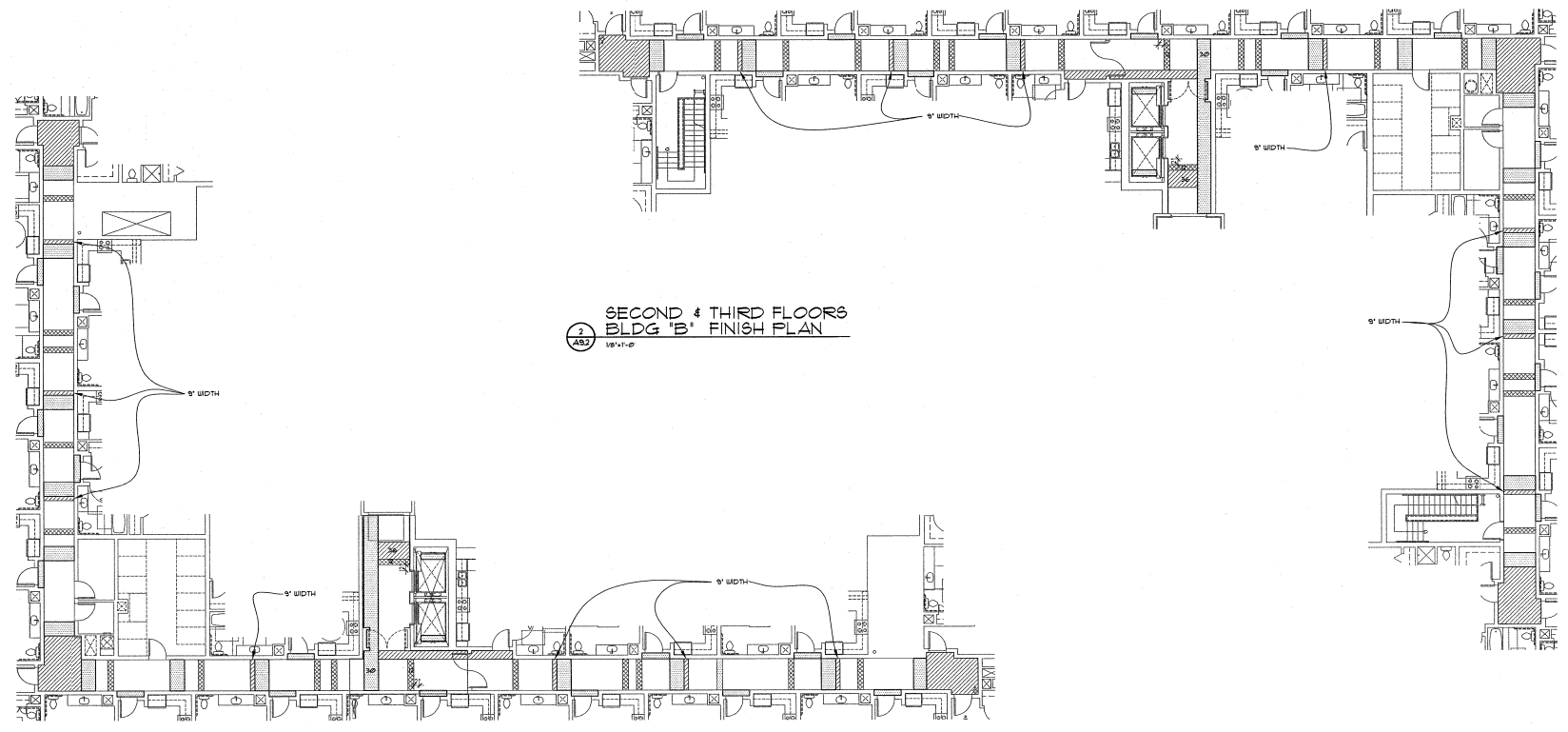
1 FIRST FLOOR BLDG "A" FINISH PLAN
 1/8" = 1'-0"

- CARPET KEY:**
-  C2 - AS SHOWN
 -  C3 - AS SHOWN
 -  C4 - AS SHOWN AND AS NOTED
 -  C5 - 9' WIDTH
- CONCRETE KEY:**
-  CONCRETE 1
 -  CONCRETE 2
- TILE KEY:**
-  TILE 4
 -  TILE 5
 -  TILE 6

MARK	DATE

DATE: 03.10.05
 JOB: 641100
 FILE: AM02
 DRAWN:
 CHECKED:

SECOND & THIRD FLOORS FINISH PLAN



2
482
 SECOND & THIRD FLOORS
 BLDG 'B' FINISH PLAN
 10'-11'-0"

1
481
 SECOND & THIRD FLOORS
 BLDG 'A' FINISH PLAN
 10'-11'-0"

NOTE: REFER TO A81 FOR FLOORING DIMENSIONS

CARPET KEY:

- C1 - AS SHOWN
- C3 - AS SHOWN
- C4 - AS SHOWN AND AS NOTED
- C5 - 12' WIDTH

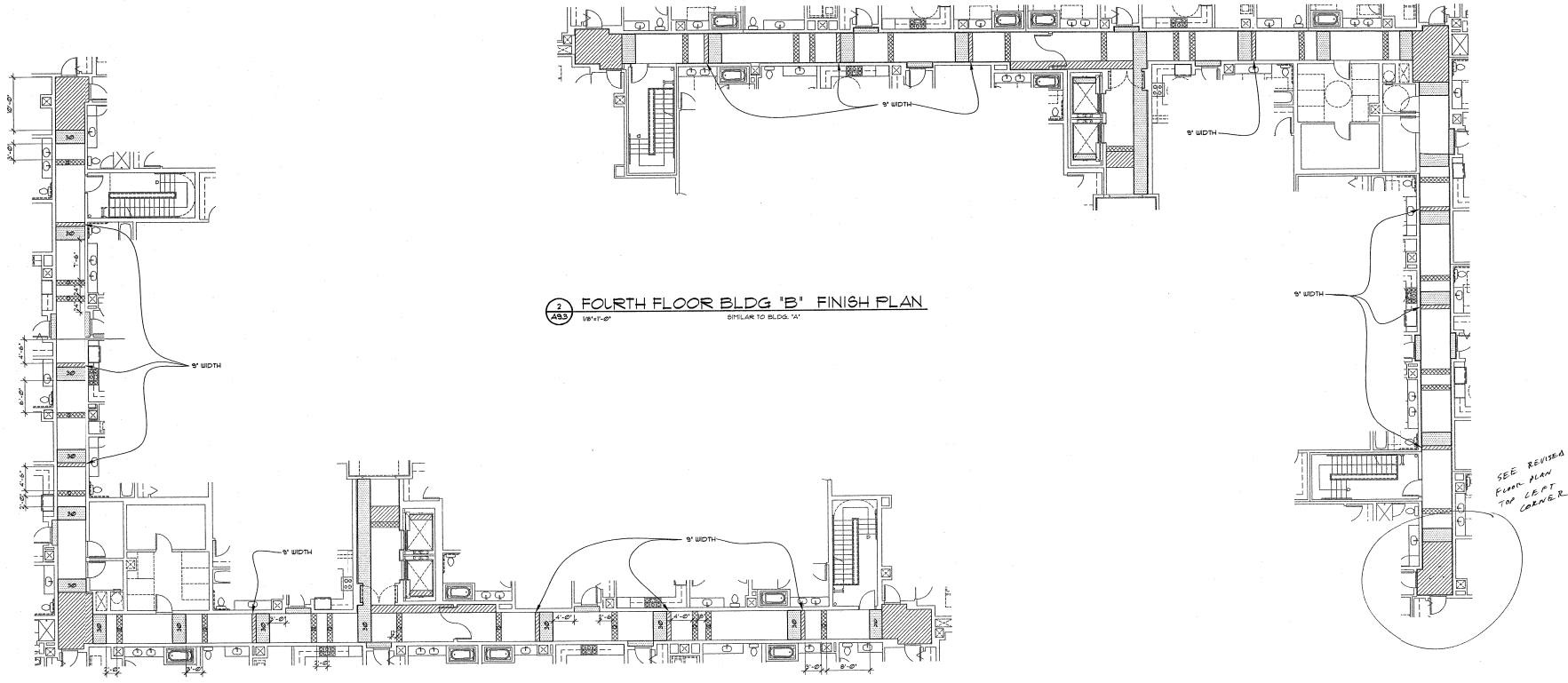


TCR - THE VAUX
 TRAMMELL CROW RESIDENTIAL

MARK	DATE

DATE: 03.10.05
 JOB: 041100
 FILE: AH-03
 DRAWN: _____
 CHECKED: _____

COPYRIGHT ANKRUM MOISAN
 ASSOCIATED ARCHITECTS (2004)



2 FOURTH FLOOR BLDG 'B' FINISH PLAN
1/8"=1'-0" SIMILAR TO BLDG. 'A'

MMD
 2-6-05

CARPET KEY:

- C2 - AS SHOWN
- C3 - AS SHOWN
- C4 - AS SHOWN AND AS NOTED
- C5 - 12' WIDTH

1 FOURTH FLOOR BLDG 'A' FINISH PLAN
1/8"=1'-0"

ANKRUM MOISAN ARCHITECTS, INC. IS AN EQUAL OPPORTUNITY FIRM.
 REGISTERED ARCHITECTS: ANKRUM MOISAN ARCHITECTS, INC.