



Fire Systems West
 600 SE Maritime Avenue, Suite
 Vancouver, WA 98661
 (360) 693-9906 fax: (503) 281-1089

WA CONTR. LIC. REC. CMB-143-01 • OR CONTR. LIC. REC. 4723 • P.O. BOX 50 • 97133-0050

SPRINKLER SYMBOL DESCRIPTION

SYMBOL	TYPE	WET	WDR	DRY	TOP	FRSH	CHNGP	TOTAL
TOTAL SPRINKLERS SHOWN ON THIS SHEET								
HANGER LEGEND								
1	1" TYP. HOSE							
2	2" DAMN BUCK EXHAUST							
3	2" TYP. CLAMP							
4	2" TYP. HOSE CLAMP							
5	2" HOSE WRENCH							
6	2" HOSE WRENCH							
7	2" HOSE WRENCH							
8	2" HOSE WRENCH							
9	2" HOSE WRENCH							
10	2" HOSE WRENCH							
11	2" HOSE WRENCH							
12	2" HOSE WRENCH							
13	2" HOSE WRENCH							
14	2" HOSE WRENCH							
15	2" HOSE WRENCH							
16	2" HOSE WRENCH							
17	2" HOSE WRENCH							
18	2" HOSE WRENCH							
19	2" HOSE WRENCH							
20	2" HOSE WRENCH							

APPROVALS REQUIRED	DISTRIBUTION
DESIGNED BY	ENGINEER/ARCHITECT
CHECKED BY	CITY OF PORTLAND
DATE	
TOTAL	

GENERAL NOTES

- ALL MATERIAL AND EQUIPMENT TO BE USED AND INSTALLATION APPROVED BY THE CITY OF PORTLAND.
- SPRINKLER SYSTEM SHALL BE INSTALLED IN ACCORDANCE WITH THE CITY OF PORTLAND FIRE DEPARTMENT SPECIFICATIONS.
- SPRINKLER SYSTEM SHALL BE INSTALLED IN ACCORDANCE WITH THE CITY OF PORTLAND FIRE DEPARTMENT SPECIFICATIONS.
- SPRINKLER SYSTEM SHALL BE INSTALLED IN ACCORDANCE WITH THE CITY OF PORTLAND FIRE DEPARTMENT SPECIFICATIONS.
- SPRINKLER SYSTEM SHALL BE INSTALLED IN ACCORDANCE WITH THE CITY OF PORTLAND FIRE DEPARTMENT SPECIFICATIONS.
- SPRINKLER SYSTEM SHALL BE INSTALLED IN ACCORDANCE WITH THE CITY OF PORTLAND FIRE DEPARTMENT SPECIFICATIONS.
- SPRINKLER SYSTEM SHALL BE INSTALLED IN ACCORDANCE WITH THE CITY OF PORTLAND FIRE DEPARTMENT SPECIFICATIONS.
- SPRINKLER SYSTEM SHALL BE INSTALLED IN ACCORDANCE WITH THE CITY OF PORTLAND FIRE DEPARTMENT SPECIFICATIONS.
- SPRINKLER SYSTEM SHALL BE INSTALLED IN ACCORDANCE WITH THE CITY OF PORTLAND FIRE DEPARTMENT SPECIFICATIONS.
- SPRINKLER SYSTEM SHALL BE INSTALLED IN ACCORDANCE WITH THE CITY OF PORTLAND FIRE DEPARTMENT SPECIFICATIONS.

DESIGN CRITERIA AND NOTES

- BUILDING AREA - RESIDENTIAL UNITS**
 - RESIDENTIAL UNITS SHALL BE INSTALLED IN ACCORDANCE WITH THE CITY OF PORTLAND FIRE DEPARTMENT SPECIFICATIONS.
 - RESIDENTIAL UNITS SHALL BE INSTALLED IN ACCORDANCE WITH THE CITY OF PORTLAND FIRE DEPARTMENT SPECIFICATIONS.
 - RESIDENTIAL UNITS SHALL BE INSTALLED IN ACCORDANCE WITH THE CITY OF PORTLAND FIRE DEPARTMENT SPECIFICATIONS.
 - RESIDENTIAL UNITS SHALL BE INSTALLED IN ACCORDANCE WITH THE CITY OF PORTLAND FIRE DEPARTMENT SPECIFICATIONS.
 - RESIDENTIAL UNITS SHALL BE INSTALLED IN ACCORDANCE WITH THE CITY OF PORTLAND FIRE DEPARTMENT SPECIFICATIONS.
 - RESIDENTIAL UNITS SHALL BE INSTALLED IN ACCORDANCE WITH THE CITY OF PORTLAND FIRE DEPARTMENT SPECIFICATIONS.
 - RESIDENTIAL UNITS SHALL BE INSTALLED IN ACCORDANCE WITH THE CITY OF PORTLAND FIRE DEPARTMENT SPECIFICATIONS.
 - RESIDENTIAL UNITS SHALL BE INSTALLED IN ACCORDANCE WITH THE CITY OF PORTLAND FIRE DEPARTMENT SPECIFICATIONS.
 - RESIDENTIAL UNITS SHALL BE INSTALLED IN ACCORDANCE WITH THE CITY OF PORTLAND FIRE DEPARTMENT SPECIFICATIONS.
 - RESIDENTIAL UNITS SHALL BE INSTALLED IN ACCORDANCE WITH THE CITY OF PORTLAND FIRE DEPARTMENT SPECIFICATIONS.
- BUILDING AREA - COMMON AREAS**
 - RESIDENTIAL UNITS SHALL BE INSTALLED IN ACCORDANCE WITH THE CITY OF PORTLAND FIRE DEPARTMENT SPECIFICATIONS.
 - RESIDENTIAL UNITS SHALL BE INSTALLED IN ACCORDANCE WITH THE CITY OF PORTLAND FIRE DEPARTMENT SPECIFICATIONS.
 - RESIDENTIAL UNITS SHALL BE INSTALLED IN ACCORDANCE WITH THE CITY OF PORTLAND FIRE DEPARTMENT SPECIFICATIONS.
 - RESIDENTIAL UNITS SHALL BE INSTALLED IN ACCORDANCE WITH THE CITY OF PORTLAND FIRE DEPARTMENT SPECIFICATIONS.
 - RESIDENTIAL UNITS SHALL BE INSTALLED IN ACCORDANCE WITH THE CITY OF PORTLAND FIRE DEPARTMENT SPECIFICATIONS.
 - RESIDENTIAL UNITS SHALL BE INSTALLED IN ACCORDANCE WITH THE CITY OF PORTLAND FIRE DEPARTMENT SPECIFICATIONS.
 - RESIDENTIAL UNITS SHALL BE INSTALLED IN ACCORDANCE WITH THE CITY OF PORTLAND FIRE DEPARTMENT SPECIFICATIONS.
 - RESIDENTIAL UNITS SHALL BE INSTALLED IN ACCORDANCE WITH THE CITY OF PORTLAND FIRE DEPARTMENT SPECIFICATIONS.
 - RESIDENTIAL UNITS SHALL BE INSTALLED IN ACCORDANCE WITH THE CITY OF PORTLAND FIRE DEPARTMENT SPECIFICATIONS.
 - RESIDENTIAL UNITS SHALL BE INSTALLED IN ACCORDANCE WITH THE CITY OF PORTLAND FIRE DEPARTMENT SPECIFICATIONS.
- BUILDING AREA - PARKING GARAGE, MECHANICAL AND ELECTRICAL ROOMS**
 - RESIDENTIAL UNITS SHALL BE INSTALLED IN ACCORDANCE WITH THE CITY OF PORTLAND FIRE DEPARTMENT SPECIFICATIONS.
 - RESIDENTIAL UNITS SHALL BE INSTALLED IN ACCORDANCE WITH THE CITY OF PORTLAND FIRE DEPARTMENT SPECIFICATIONS.
 - RESIDENTIAL UNITS SHALL BE INSTALLED IN ACCORDANCE WITH THE CITY OF PORTLAND FIRE DEPARTMENT SPECIFICATIONS.
 - RESIDENTIAL UNITS SHALL BE INSTALLED IN ACCORDANCE WITH THE CITY OF PORTLAND FIRE DEPARTMENT SPECIFICATIONS.
 - RESIDENTIAL UNITS SHALL BE INSTALLED IN ACCORDANCE WITH THE CITY OF PORTLAND FIRE DEPARTMENT SPECIFICATIONS.
 - RESIDENTIAL UNITS SHALL BE INSTALLED IN ACCORDANCE WITH THE CITY OF PORTLAND FIRE DEPARTMENT SPECIFICATIONS.
 - RESIDENTIAL UNITS SHALL BE INSTALLED IN ACCORDANCE WITH THE CITY OF PORTLAND FIRE DEPARTMENT SPECIFICATIONS.
 - RESIDENTIAL UNITS SHALL BE INSTALLED IN ACCORDANCE WITH THE CITY OF PORTLAND FIRE DEPARTMENT SPECIFICATIONS.
 - RESIDENTIAL UNITS SHALL BE INSTALLED IN ACCORDANCE WITH THE CITY OF PORTLAND FIRE DEPARTMENT SPECIFICATIONS.
 - RESIDENTIAL UNITS SHALL BE INSTALLED IN ACCORDANCE WITH THE CITY OF PORTLAND FIRE DEPARTMENT SPECIFICATIONS.
- BUILDING AREA - MECHANICAL, MECHANICAL AND ELECTRICAL ROOMS**
 - RESIDENTIAL UNITS SHALL BE INSTALLED IN ACCORDANCE WITH THE CITY OF PORTLAND FIRE DEPARTMENT SPECIFICATIONS.
 - RESIDENTIAL UNITS SHALL BE INSTALLED IN ACCORDANCE WITH THE CITY OF PORTLAND FIRE DEPARTMENT SPECIFICATIONS.
 - RESIDENTIAL UNITS SHALL BE INSTALLED IN ACCORDANCE WITH THE CITY OF PORTLAND FIRE DEPARTMENT SPECIFICATIONS.
 - RESIDENTIAL UNITS SHALL BE INSTALLED IN ACCORDANCE WITH THE CITY OF PORTLAND FIRE DEPARTMENT SPECIFICATIONS.
 - RESIDENTIAL UNITS SHALL BE INSTALLED IN ACCORDANCE WITH THE CITY OF PORTLAND FIRE DEPARTMENT SPECIFICATIONS.
 - RESIDENTIAL UNITS SHALL BE INSTALLED IN ACCORDANCE WITH THE CITY OF PORTLAND FIRE DEPARTMENT SPECIFICATIONS.
 - RESIDENTIAL UNITS SHALL BE INSTALLED IN ACCORDANCE WITH THE CITY OF PORTLAND FIRE DEPARTMENT SPECIFICATIONS.
 - RESIDENTIAL UNITS SHALL BE INSTALLED IN ACCORDANCE WITH THE CITY OF PORTLAND FIRE DEPARTMENT SPECIFICATIONS.
 - RESIDENTIAL UNITS SHALL BE INSTALLED IN ACCORDANCE WITH THE CITY OF PORTLAND FIRE DEPARTMENT SPECIFICATIONS.
 - RESIDENTIAL UNITS SHALL BE INSTALLED IN ACCORDANCE WITH THE CITY OF PORTLAND FIRE DEPARTMENT SPECIFICATIONS.

NOTES

- SPRINKLER SYSTEM SHALL BE INSTALLED IN ACCORDANCE WITH THE CITY OF PORTLAND FIRE DEPARTMENT SPECIFICATIONS.
- SPRINKLER SYSTEM SHALL BE INSTALLED IN ACCORDANCE WITH THE CITY OF PORTLAND FIRE DEPARTMENT SPECIFICATIONS.
- SPRINKLER SYSTEM SHALL BE INSTALLED IN ACCORDANCE WITH THE CITY OF PORTLAND FIRE DEPARTMENT SPECIFICATIONS.
- SPRINKLER SYSTEM SHALL BE INSTALLED IN ACCORDANCE WITH THE CITY OF PORTLAND FIRE DEPARTMENT SPECIFICATIONS.
- SPRINKLER SYSTEM SHALL BE INSTALLED IN ACCORDANCE WITH THE CITY OF PORTLAND FIRE DEPARTMENT SPECIFICATIONS.
- SPRINKLER SYSTEM SHALL BE INSTALLED IN ACCORDANCE WITH THE CITY OF PORTLAND FIRE DEPARTMENT SPECIFICATIONS.
- SPRINKLER SYSTEM SHALL BE INSTALLED IN ACCORDANCE WITH THE CITY OF PORTLAND FIRE DEPARTMENT SPECIFICATIONS.
- SPRINKLER SYSTEM SHALL BE INSTALLED IN ACCORDANCE WITH THE CITY OF PORTLAND FIRE DEPARTMENT SPECIFICATIONS.
- SPRINKLER SYSTEM SHALL BE INSTALLED IN ACCORDANCE WITH THE CITY OF PORTLAND FIRE DEPARTMENT SPECIFICATIONS.
- SPRINKLER SYSTEM SHALL BE INSTALLED IN ACCORDANCE WITH THE CITY OF PORTLAND FIRE DEPARTMENT SPECIFICATIONS.

REVISIONS

NO.	DESCRIPTION	DATE
1	PER ARCHITECT REVIEW COMMENTS	11-14-05
2	PER LISTING	11-14-05

AS BUILT

NO. _____ DATE _____

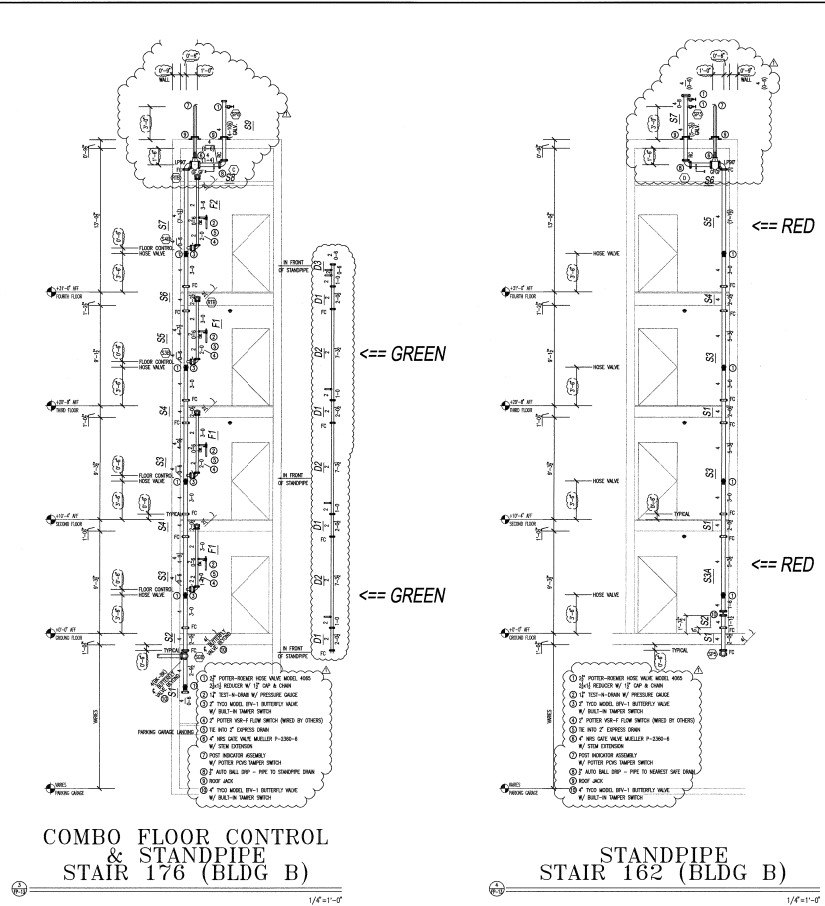
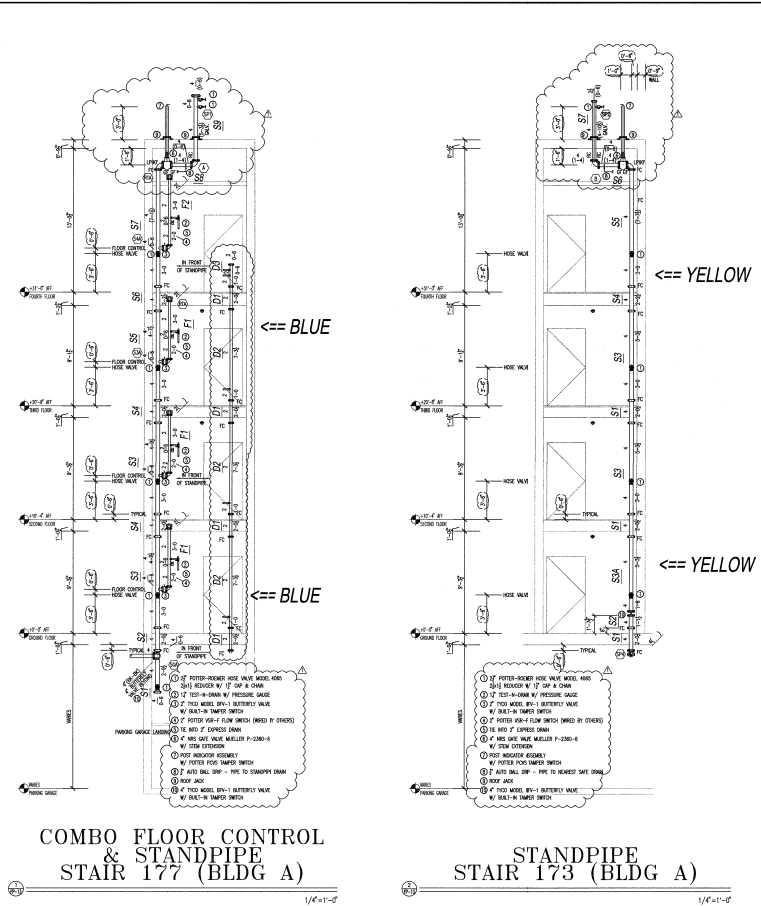
DESCRIPTION _____

THE VAUX
 1600 N.W. 24th AVENUE
 PORTLAND, OREGON 97210
 5th FLOOR - PORTLAND, OREGON
 JOB SITE: PORTLAND, OREGON
 JOB SITE: PORTLAND, OREGON
 JOB SITE: PORTLAND, OREGON

CONTRACT WITH:
TRAMMELL CROW RESIDENTIAL
 830 NW 10TH AVE
 PORTLAND, OR 97209
 PHONE: 503-241-5537
 FAX: 503-241-5462

DWG. TITLE:
 COMBO FLOOR CONTROL & STANDPIPE STAIR 177 (BLDG A)
 COMBO FLOOR CONTROL & STANDPIPE STAIR 173 (BLDG A)
 COMBO FLOOR CONTROL & STANDPIPE STAIR 176 (BLDG B)
 COMBO FLOOR CONTROL & STANDPIPE STAIR 162 (BLDG B)

DESIGNER: DATE: JOB NO.: SHEET: 11-14-05 11-14-05 11-14-05 11-14-05



REVISIONS

NO.	DESCRIPTION	DATE
1	PER ARCHITECT REVIEW COMMENTS	11-14-05
2	PER LISTING	11-14-05

AS BUILT

NO. _____ DATE _____

DESCRIPTION _____

THE VAUX
 1600 N.W. 24th AVENUE
 PORTLAND, OREGON 97210
 5th FLOOR - PORTLAND, OREGON
 JOB SITE: PORTLAND, OREGON
 JOB SITE: PORTLAND, OREGON
 JOB SITE: PORTLAND, OREGON

CONTRACT WITH:
TRAMMELL CROW RESIDENTIAL
 830 NW 10TH AVE
 PORTLAND, OR 97209
 PHONE: 503-241-5537
 FAX: 503-241-5462

DWG. TITLE:
 COMBO FLOOR CONTROL & STANDPIPE STAIR 177 (BLDG A)
 COMBO FLOOR CONTROL & STANDPIPE STAIR 173 (BLDG A)
 COMBO FLOOR CONTROL & STANDPIPE STAIR 176 (BLDG B)
 COMBO FLOOR CONTROL & STANDPIPE STAIR 162 (BLDG B)

DESIGNER: DATE: JOB NO.: SHEET: 11-14-05 11-14-05 11-14-05 11-14-05