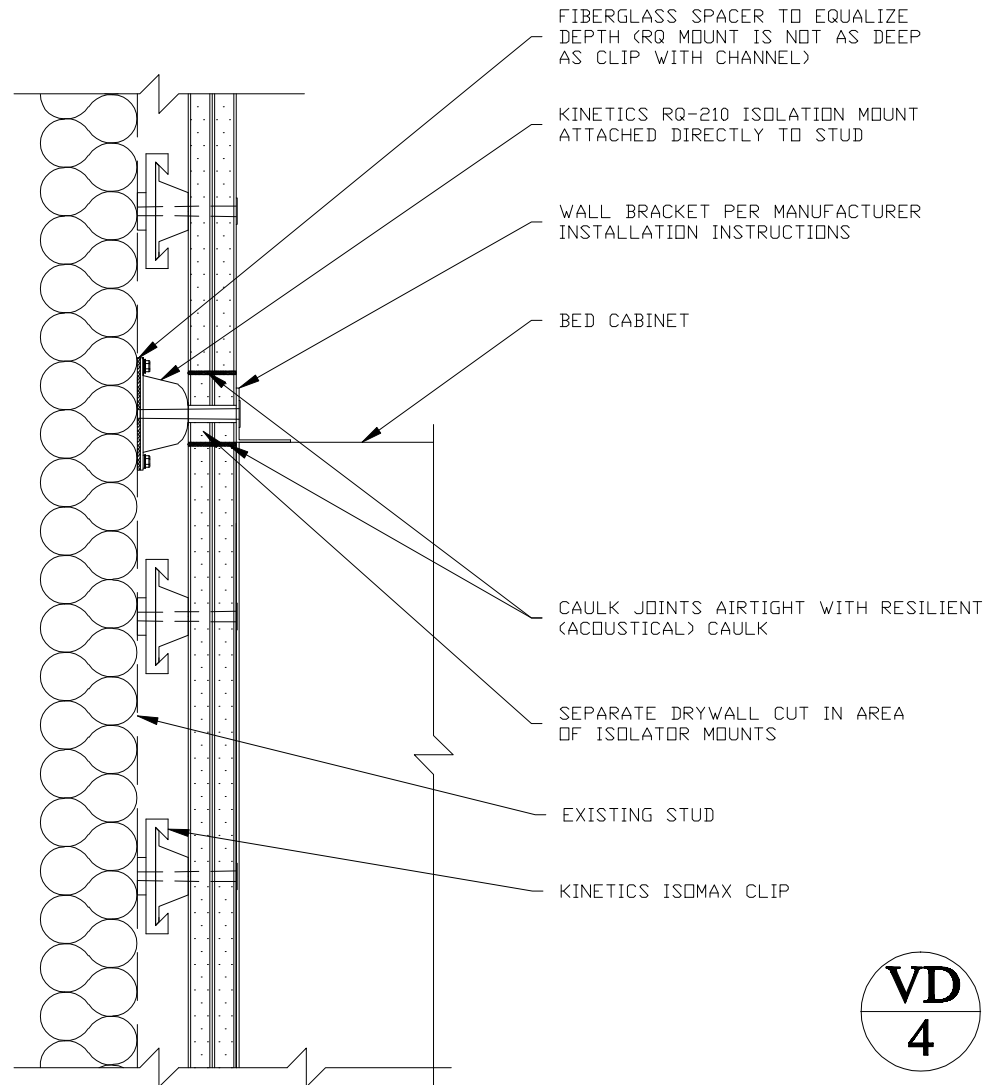
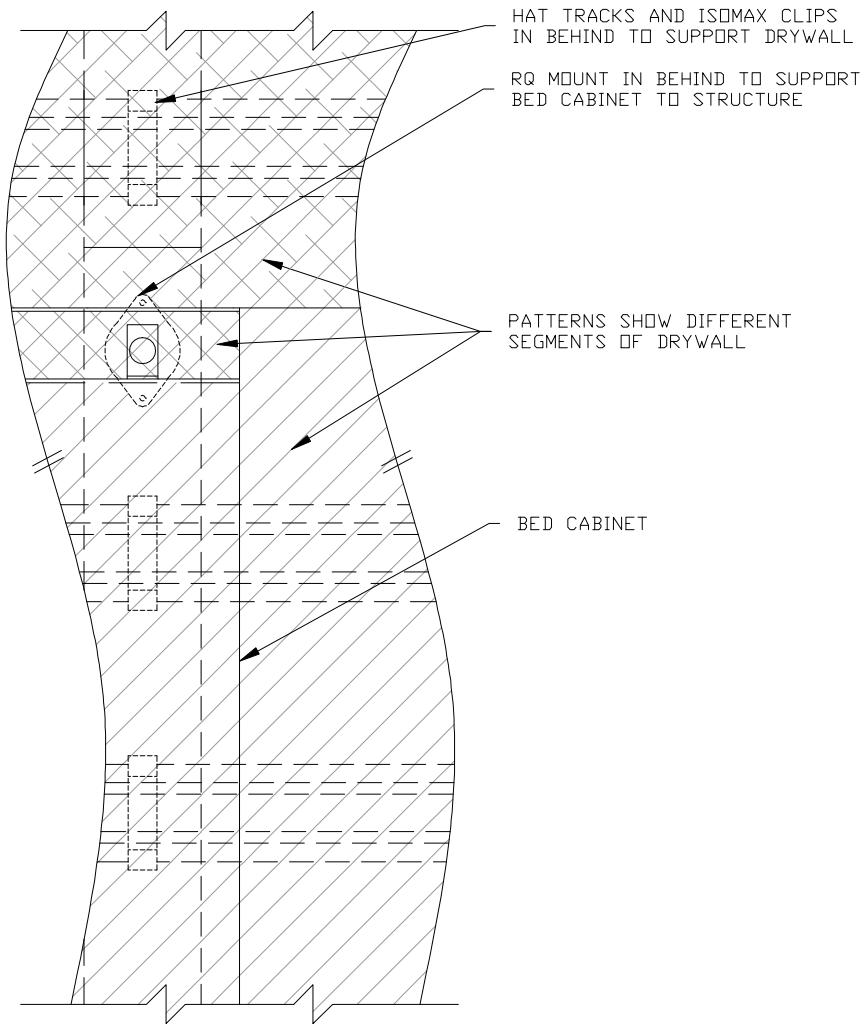


NOTES: THE NUMBER OF CLIPS MUST BE SELECTED TO PROPERLY SUPPORT THE LOAD.
CONTACT THE MANUFACTURER'S REP FOR INFORMATION.

EXISTING GYPSUM WALLBOARDS AND RESILIENT CHANNELS TO BE REMOVED AND REPLACED WITH KINETICS ISOMAX CLIPS AND 7/8" HAT TRACKS. RESTORE SAME NUMBER OF 5/8" TYPE 'X' GYPSUM BOARDS.



VD
4

MURPHY BED ACOUSTICAL ISOLATION



LISTEN ACOUSTICS, INC.

5144 W. Sunset Drive
Lake Oswego, OR 97035
(503) 241-5255

1100 Dexter Ave. N.
Suite 100
Seattle, WA 98109
(206) 223-1390

DRAWING SCALE:

NTS

DRAWN BY:

AM

CHECKED BY:

NTC

DATE:

03/10/09

FILE:

VAUX DETAILS.DWG